



Artists and Machine Intelligence



# What is Deep Learning?

## Artificial Intelligence:

the theory and development of computer systems able to perform tasks normally requiring human intelligence, such as visual perception, speech recognition, decision-making, and translation between languages.



GOFAI:

Good Old-Fashioned AI

(rule-based systems, if this then that)

Neural Nets:

Artificial neural networks (ANNs) or connectionist systems are computing systems inspired by the biological neural networks that constitute animal brains



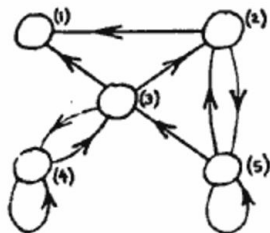
Neurons visualized by Santiago Ramon y Cajal using cell-staining and microscopy ca 1900.

#### 4. Unorganised machines.

So far we have been considering machines which are designed for a definite purpose (though the universal machines are in a sense an exception). We might instead consider what happens when we make up a machine in a comparatively unsystematic way from some kind of standard components. We could consider some particular machine of this nature and find out what sort of things it is likely to do. Machines which are largely random in their construction in this way will be called 'unorganised machines'. This does not pretend to be an accurate term. It is conceivable that the same machine might be regarded by one man as organised and by another as unorganised.

A typical example of an unorganised machine would be as follows. The machine is made up from a rather large number  $N$  of similar units. Each unit has two input terminals, and has an output terminal which can be connected to the input terminals of (0 or more) other units. We may imagine that for each integer  $r$ ,  $1 \leq r \leq N$  two numbers  $i(r)$  and  $j(r)$  are chosen at random from  $1 \dots N$  and that we connect the inputs of unit  $r$  to the outputs of units  $i(r)$  and  $j(r)$ . All of the units are connected to a central synchronising unit from which synchronising pulses are emitted at more or less equal intervals of time. The times when these pulses arrive will be called 'moments'. Each unit is capable of having two states at each moment. These states may be called 0 and 1. The state is determined by the rule that the states of the units from which the input leads come are to be taken at the previous moment, multiplied together and the result subtracted from 1. An unorganised machine of this character is shown in the diagram below.

$r$	$i(r)$	$j(r)$
1	3	2
2	3	5
3	4	5
4	3	4
5	2	5



Six

A sequence of ~~five~~ possible consecutive conditions for the whole machine is:

1	1	1	0	0	1	0
2	1	1	1	0	1	0
3	0	1	1	1	1	1
4	0	1	0	1	0	1
5	1	0	1	0	1	0

Neural Nets:

Artificial neural networks (ANNs) or connectionist systems are computing systems inspired by the biological neural networks that constitute animal brains



FLOOR  
8

SCORE  
715900

LIVES  
9



HEALTH  
89%

AMMO  
84





ROUND 1

TIED

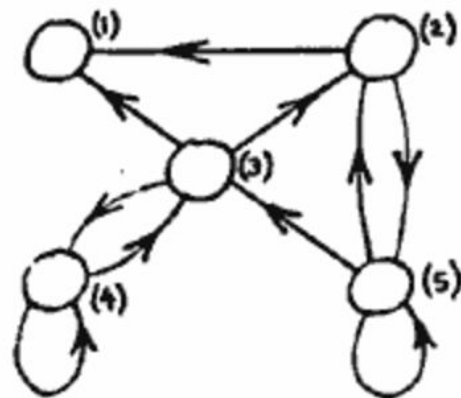


PUMP-57 CUSTOMIZED FULL-AUTO

50/150

VIDEOGAMER.COM

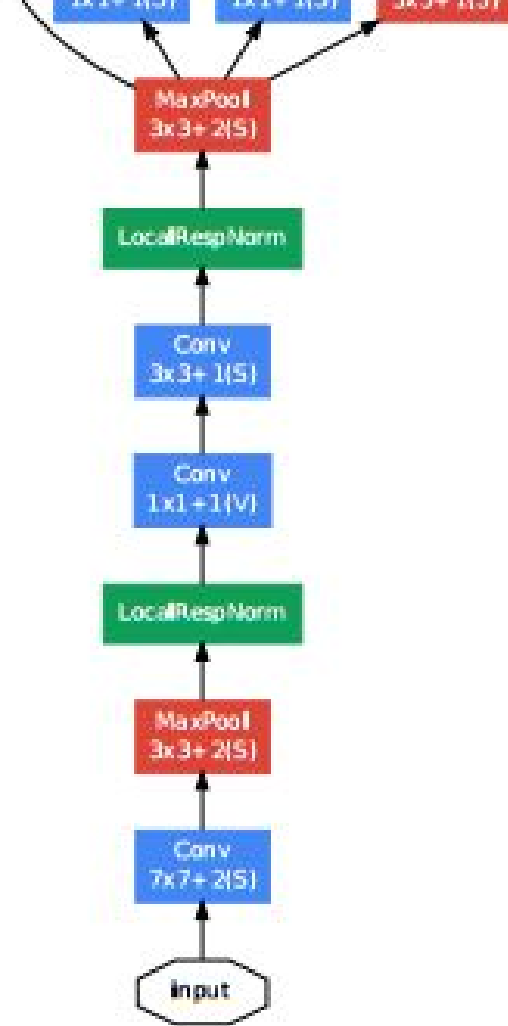
$r$	$i(r)$	$j(r)$
1	3	2
2	3	5
3	4	5
4	3	4
5	2	5



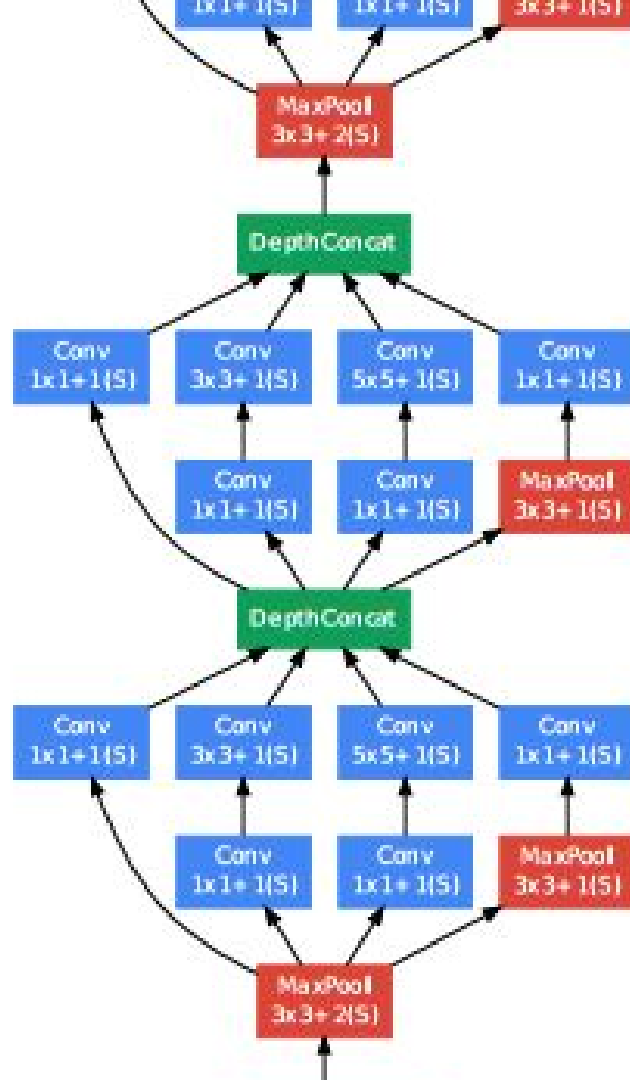
A sequence of <sup>six</sup>~~five~~ possible consecutive conditions for the whole machine is:

1	1	1	0	0	1	0
2	1	1	1	0	1	0
3	0	1	1	1	1	1
4	0	1	0	1	0	1
5	1	0	1	0	1	0

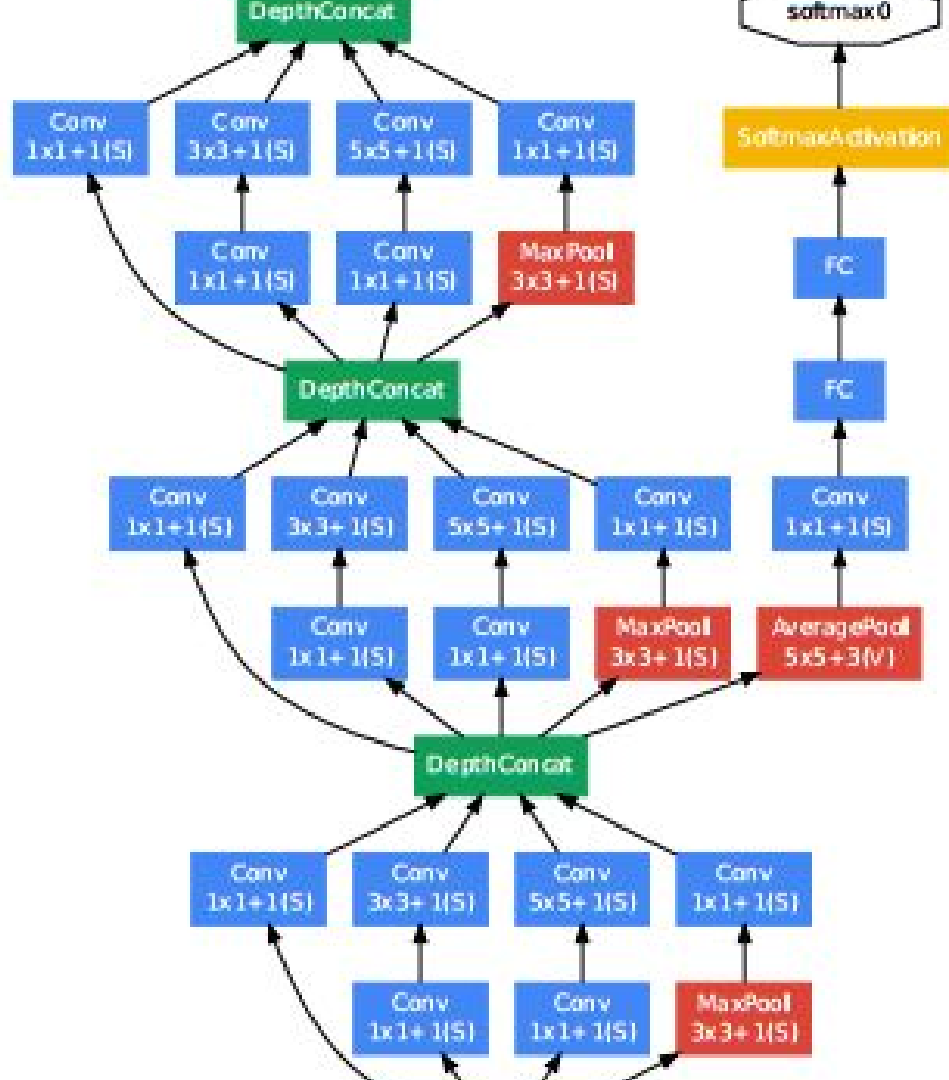




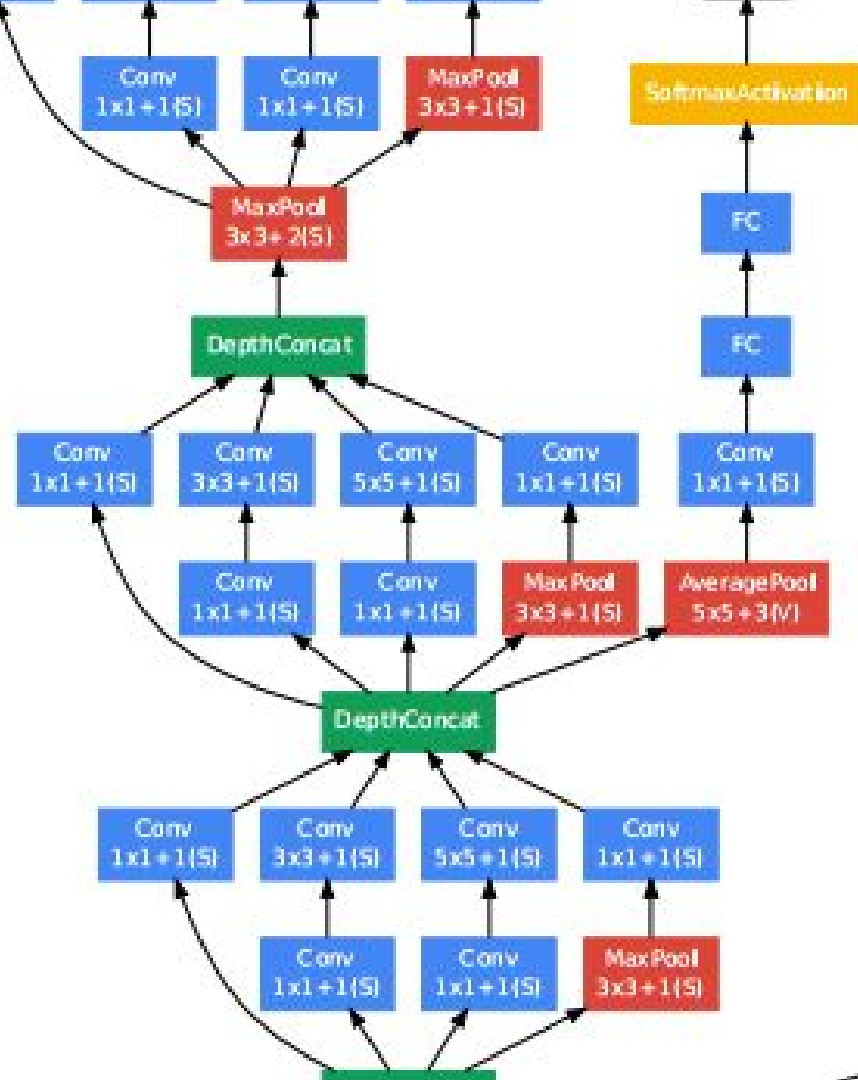
Modern deep neural net diagram



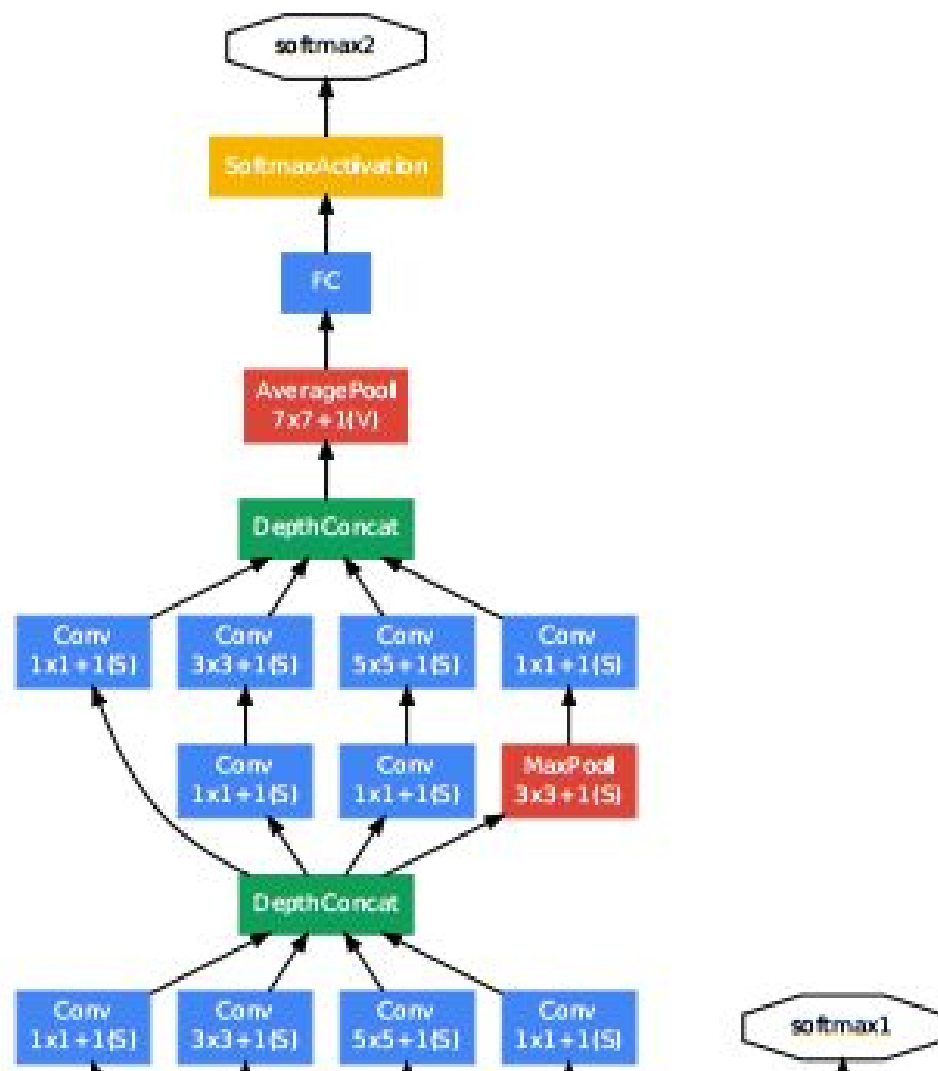
Modern deep neural net diagram



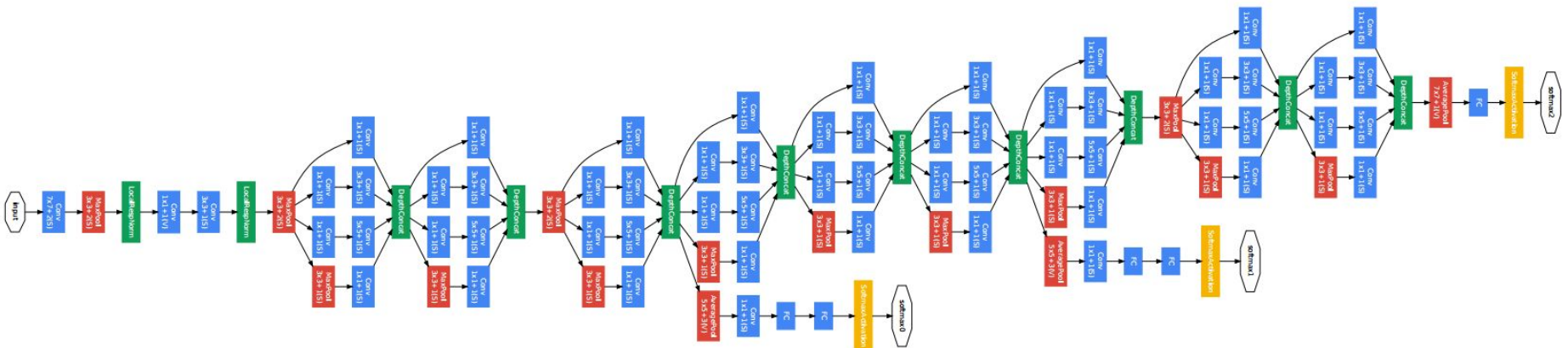
### Modern deep neural net diagram

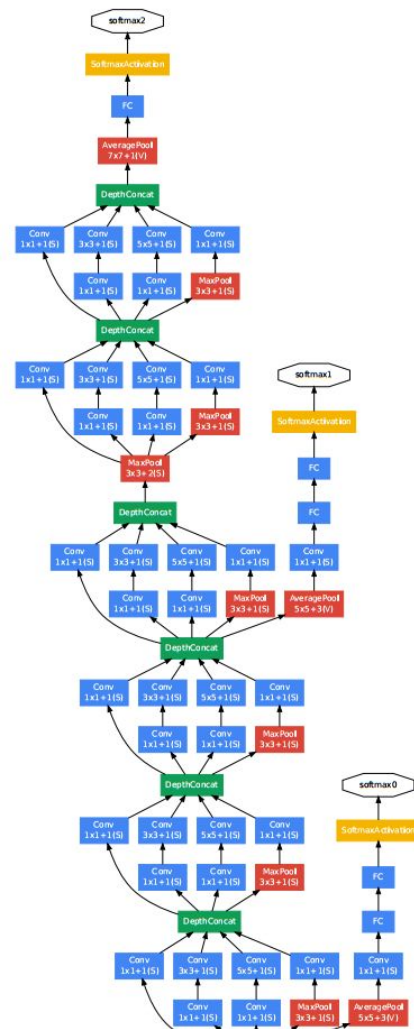
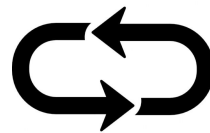
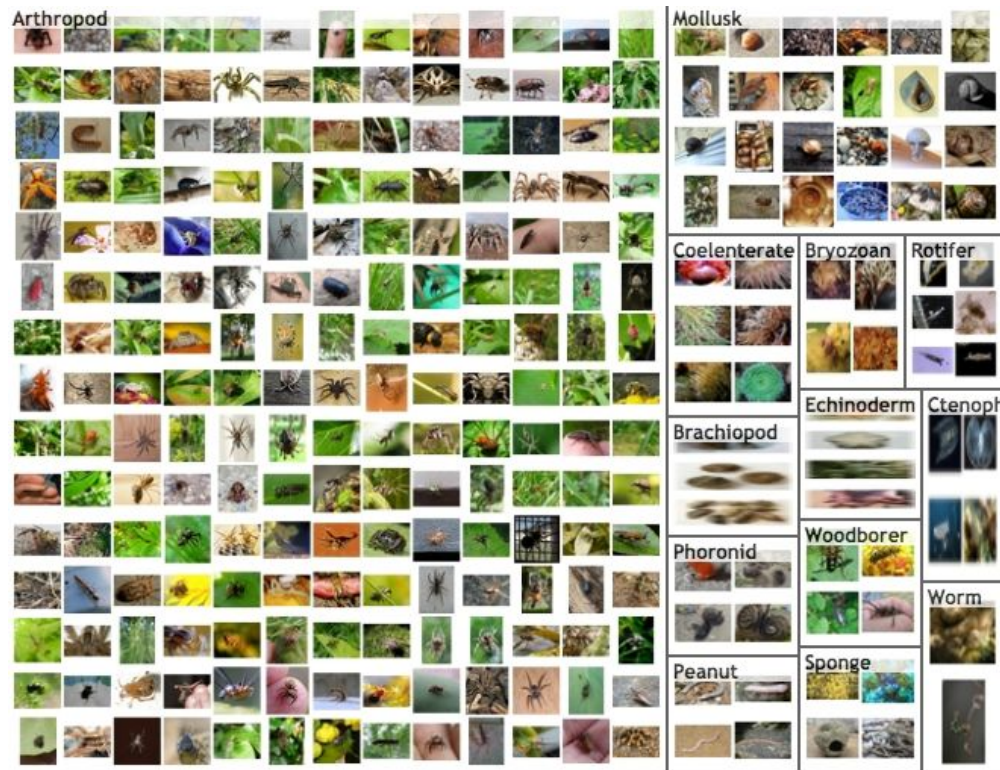


Modern deep neural net diagram

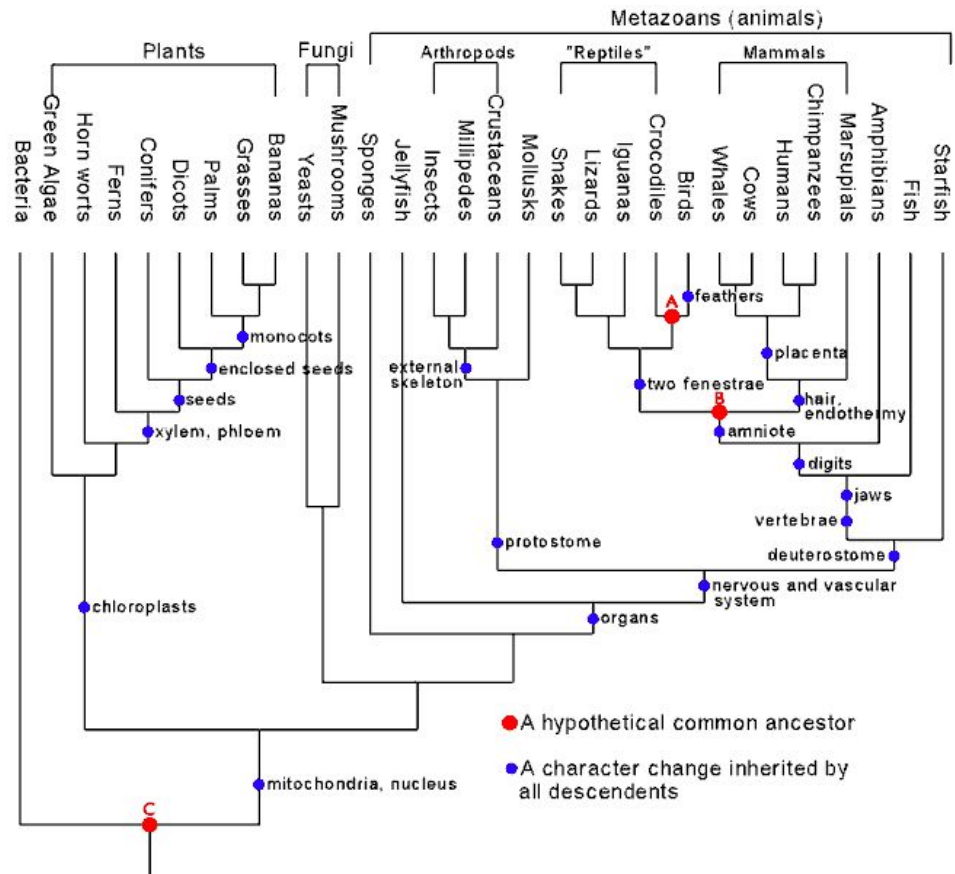


Modern deep neural net diagram

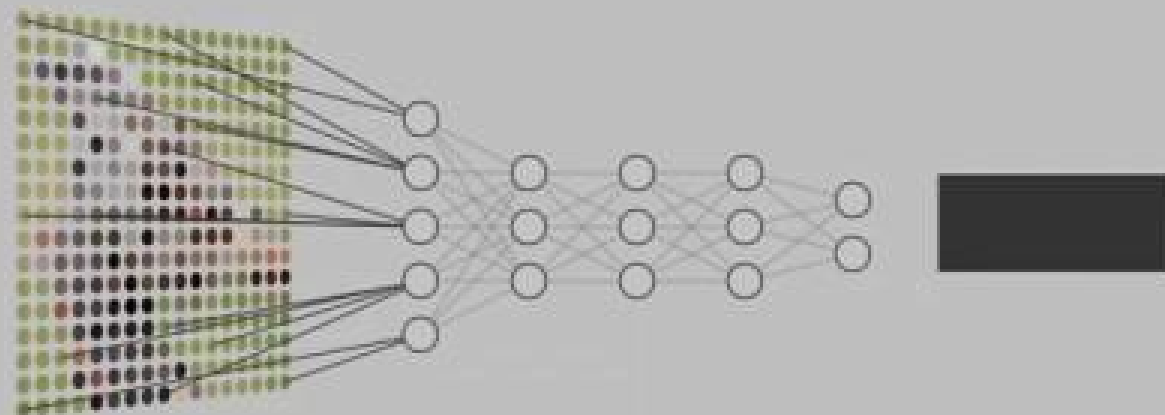












Neural nets

Compress epistemologies into numbers to

Classify sense data and

Automate decision-making



Artists and Machine Intelligence



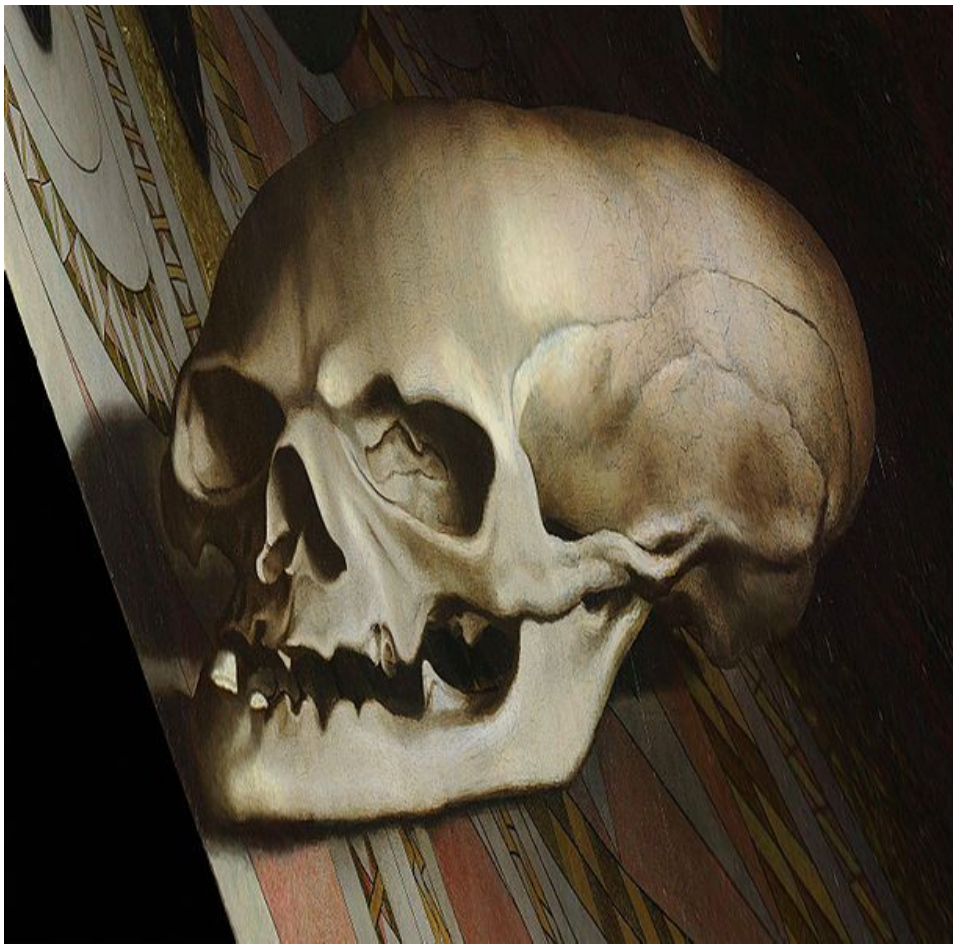


*Hand-axe, 300,000 years-old*

“The results of our imaging studies on stone toolmaking led us to propose that neural circuits, including the inferior frontal gyrus, underwent changes to adapt to the demands of Paleolithic toolmaking and then were co-opted to support primitive forms of communication using gestures and, perhaps, vocalizations.”

Dietrich Stout, Professor of Anthropology, Emory University, quoted in Scientific American magazine

New Tools that Generate  
New Languages that Reveal  
New Relations that Require  
New Contracts based on  
New Ontology

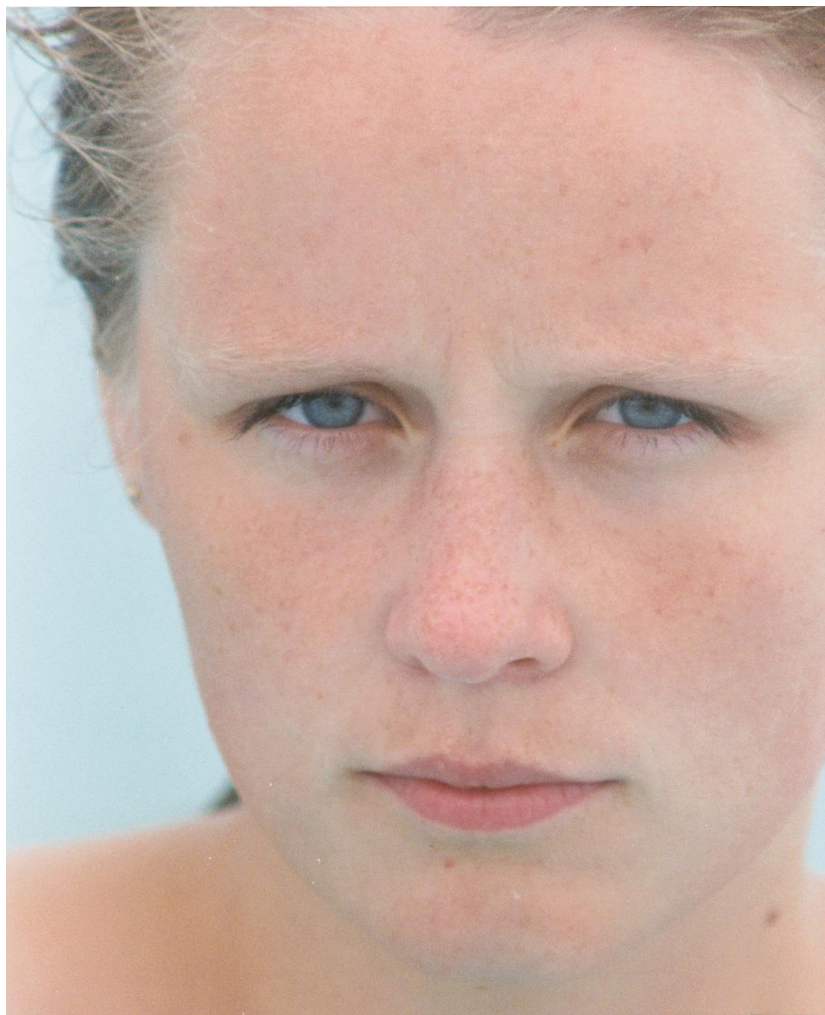


Digitally reprojected image of the anamorphic skull in Hans Holbein the Younger's 1553 painting *The Ambassadors*. [More](#).









*Hand — Lens ... CCD — Big data archive — Neural net...*

Tools create modes of cognition and change neural structures.

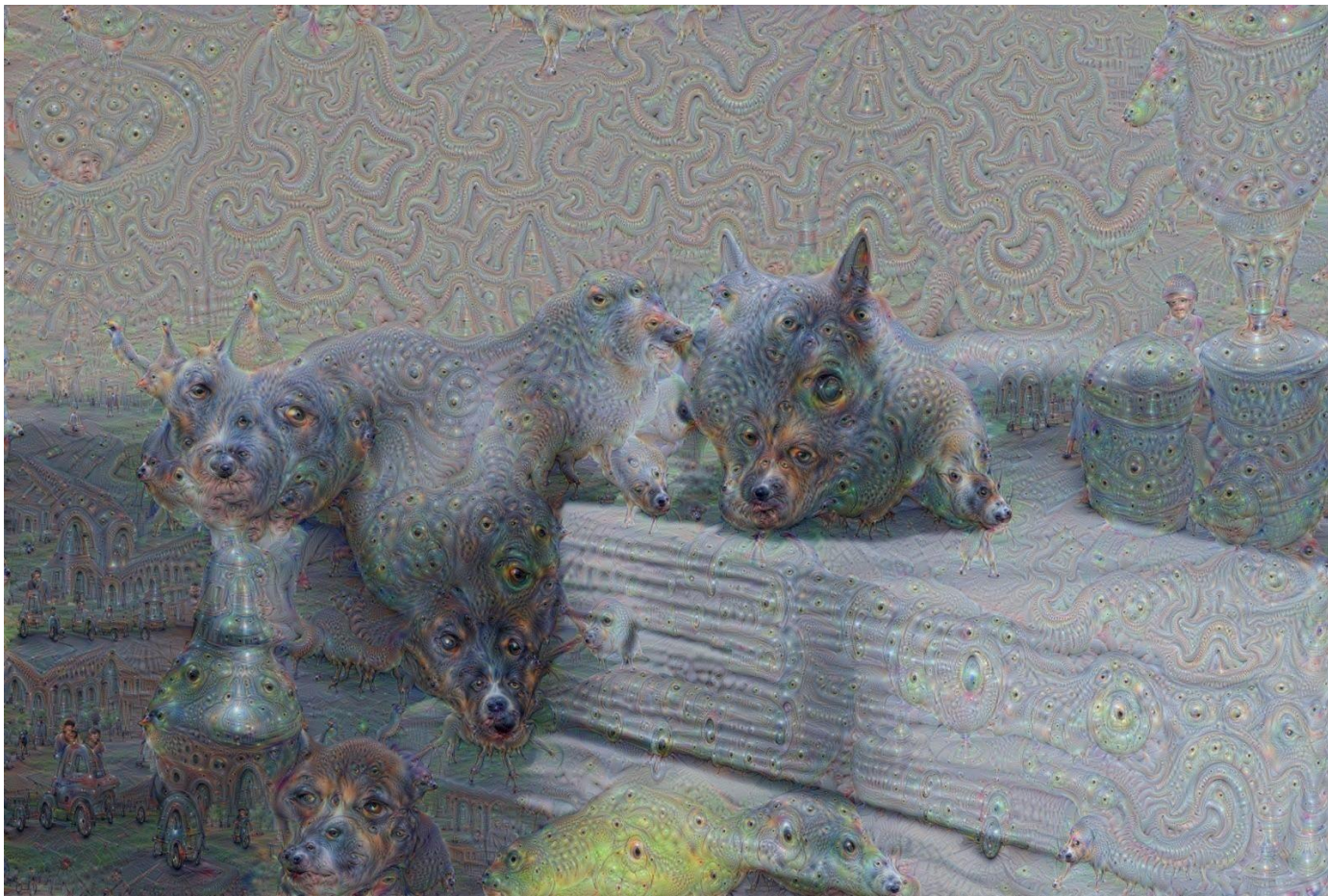
Representational tools increase in depth and complexity.

*I.e. hand, lens, plotter, CCD, big data archive, neural net*

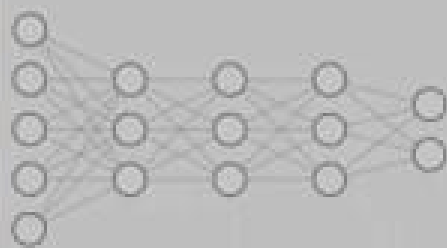
AI representations are highly multi-dimensional.

**What new language does AI art produce?**





*trippysquirrel.jpg, June 2015*



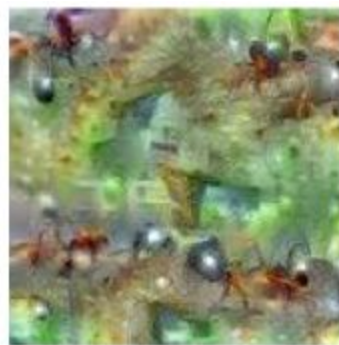
BIRD



Hartebeest



Measuring Cup



Ant



Starfish



Anemone Fish



Banana



Parachute



Screw









## Google Research Blog

The latest news from Research at Google

### Inceptionism: Going Deeper into Neural Networks

Wednesday, June 17, 2015

Posted by Alexander Mordvintsev, Software Engineer, Christopher Olah, Software Engineering Intern and Mike Tyka, Software Engineer

Update - 13/07/2015

Images in this blog post are licensed by Google Inc. under a [Creative Commons Attribution 4.0 International License](#). However, images based on places by MIT Computer Science and AI Laboratory require additional permissions from MIT for use.

Artificial Neural Networks have spurred remarkable recent progress in [image classification](#) and [speech recognition](#). But even though these are very useful tools based on well-known mathematical methods, we actually understand surprisingly little of why certain models work and others don't. So let's take a look at some simple techniques for peeking inside these networks.

We train an artificial neural network by showing it millions of training examples and [gradually adjusting the network parameters](#) until it gives the classifications we want. The network typically consists of 10-30 stacked layers of artificial neurons. Each image is fed into the input layer, which

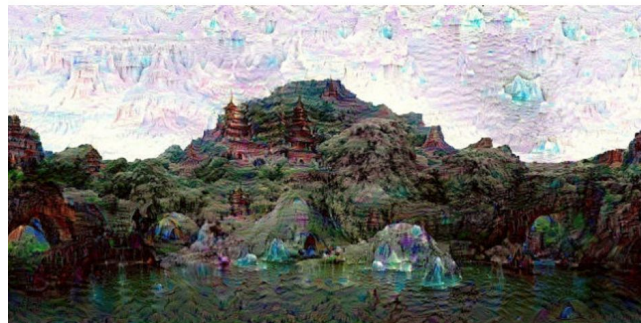
### Google's Dream Robot Is Running Wild Across the Internet



Maddie Stone

7/05/15 1:00pm · Filed to: NEURAL NETWORKS ▾

707.2K 306 72



Remember a few weeks back, when we learned that Google's artificial neural network was [having creepy daydreams](#), turning buildings into acid trips and landscapes into Magic Eye pictures? Well, prepare to never sleep again, because last week, Google made its "inceptionism" algorithm available to the public, and the nightmarish images are cropping up everywhere.

The "Deep Dream" system essentially feeds an image through a layer of artificial neurons, asking an AI to enhance and build on certain features, such as edges. Over time, pictures can become so distorted that they morph into

New Tools that Generate  
New Languages that Reveal  
New Relations that Require  
New Contracts based on  
New Ontology

[illegible]



Wordcar







[illegible]

7506

7507 2017-03-27 13:40:16

7508 Hard Rock Hotel & Casino Biloxi: a hotel in Biloxie, a high  
fisherman with a starry face, and a stub of a coat on his face and  
his shirt looking boldly across his mouth.

7509



Tech was at the center of the journey, as a synchronic key, as the “literary” engine, and as Ross put it, a substitute for mind-altering substances.



AI Poetry Hits the Road  
Kenric McDowell





zero  
books

ANGELA NAGLE

# KILL ALL NORMIES

ONLINE CULTURE WARS FROM  
4CHAN AND TUMBLR TO  
TRUMP AND THE ALT-RIGHT



New Tools that Generate  
New Languages that Reveal  
New Relations that Require  
New Contracts based on  
New Ontology

Refik Anadol



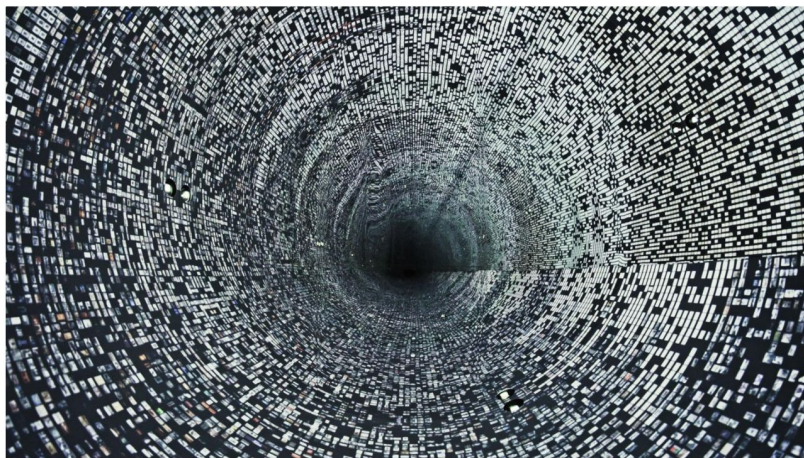
INSTALLATIONS

# 1.7 Million Documents Become an Explorable 'Library of Babel'

KH

KEVIN HOLMES

May 25 2017, 4:40pm



Images courtesy of the artist.

Using AI and machine learning, artist Refik Anadol has turned 1.7 million digital documents from a Turkish museum into a massive nod to Jorge Luis Borges.



# ARCHIVE DREAMING

DATA UNIVERSE OF SALT.ARCHIVE

EXHIBITION DESIGN

MACHINE INTELLIGENCE

1,735,278 DOCUMENTS

## EXHIBITION SPACE

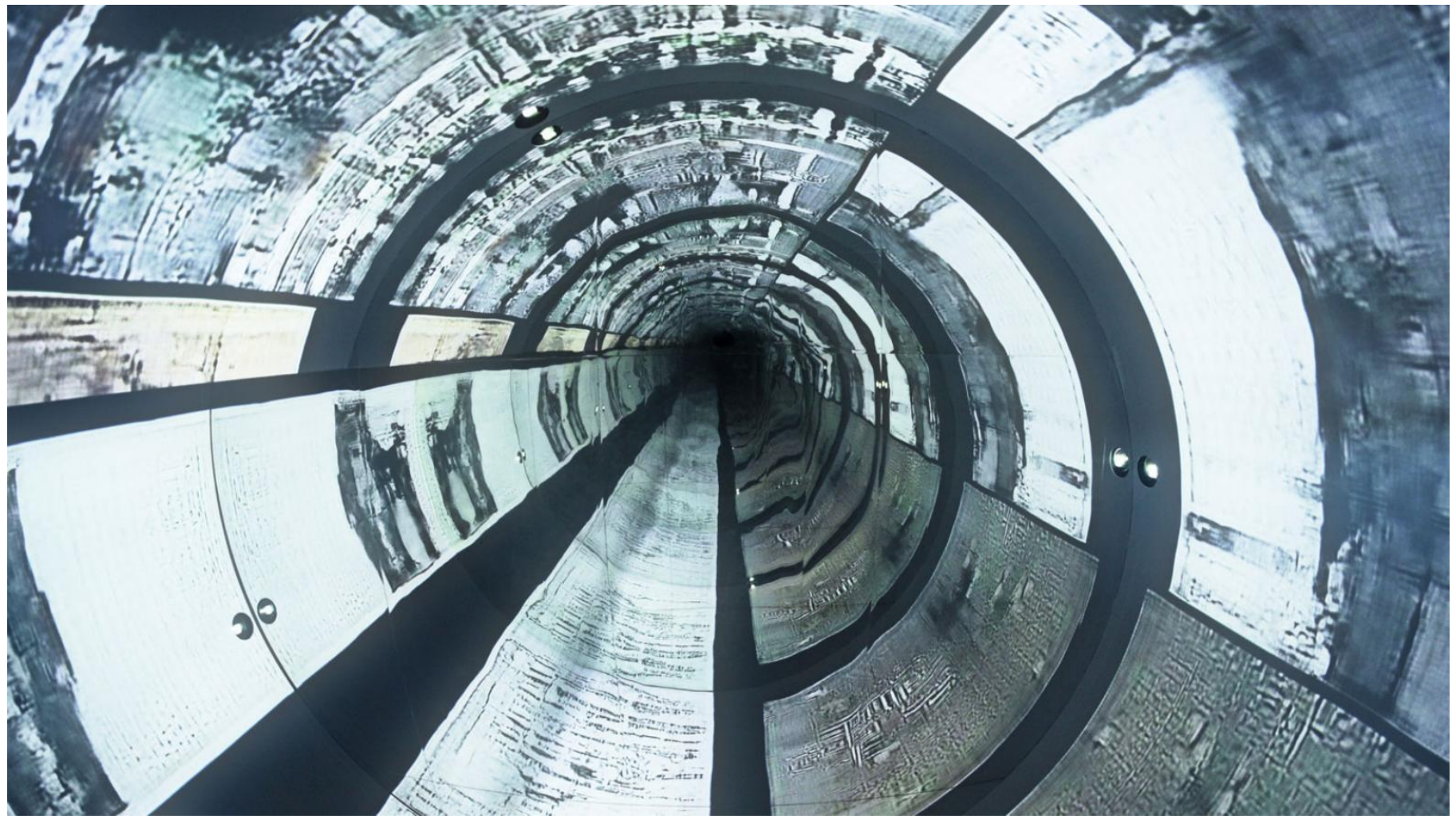
MIRROR FLOOR/CEILING  
REFLECTIVE ACRYLIC PANELS  
25MM MDF BACKING  
40MM X 300MM STIFFNER STUDS  
20MM X 300MM PLY STUDS  
STAGGERED 750MM  
20MM PLY RIBS  
CNC MILLED, UNFINISHED

## ENTRY

EXISTING WALLS  
MIRRORED CORRIDOR  
REFLECTIVE ACRYLIC PANELS,  
25MM PLY BACKING  
20MM X 300MM PLY STUDS  
2X 25MM FOOTER/HEADER

## INTERACTIVITY/ TECH

PROJECTION SURFACE  
5MM FLEXIBLE PLYWOOD  
MINIMAL GAP, SPACKLED  
FINISHED, PRO SCREEN TITANIUM PAINT  
INTERACTIVE UI  
19 MM THERMOFORMED ACRYLIC  
TABLET, CUSTOM SOFTWARE INTERFACE  
4 SONY WUXGA PROJECTORS  
7000 LM VPL-FH265 LASER LIGHT SOURCE  
1.2 THROW RATIO VPLL-Z3009 LENSES







AP000196

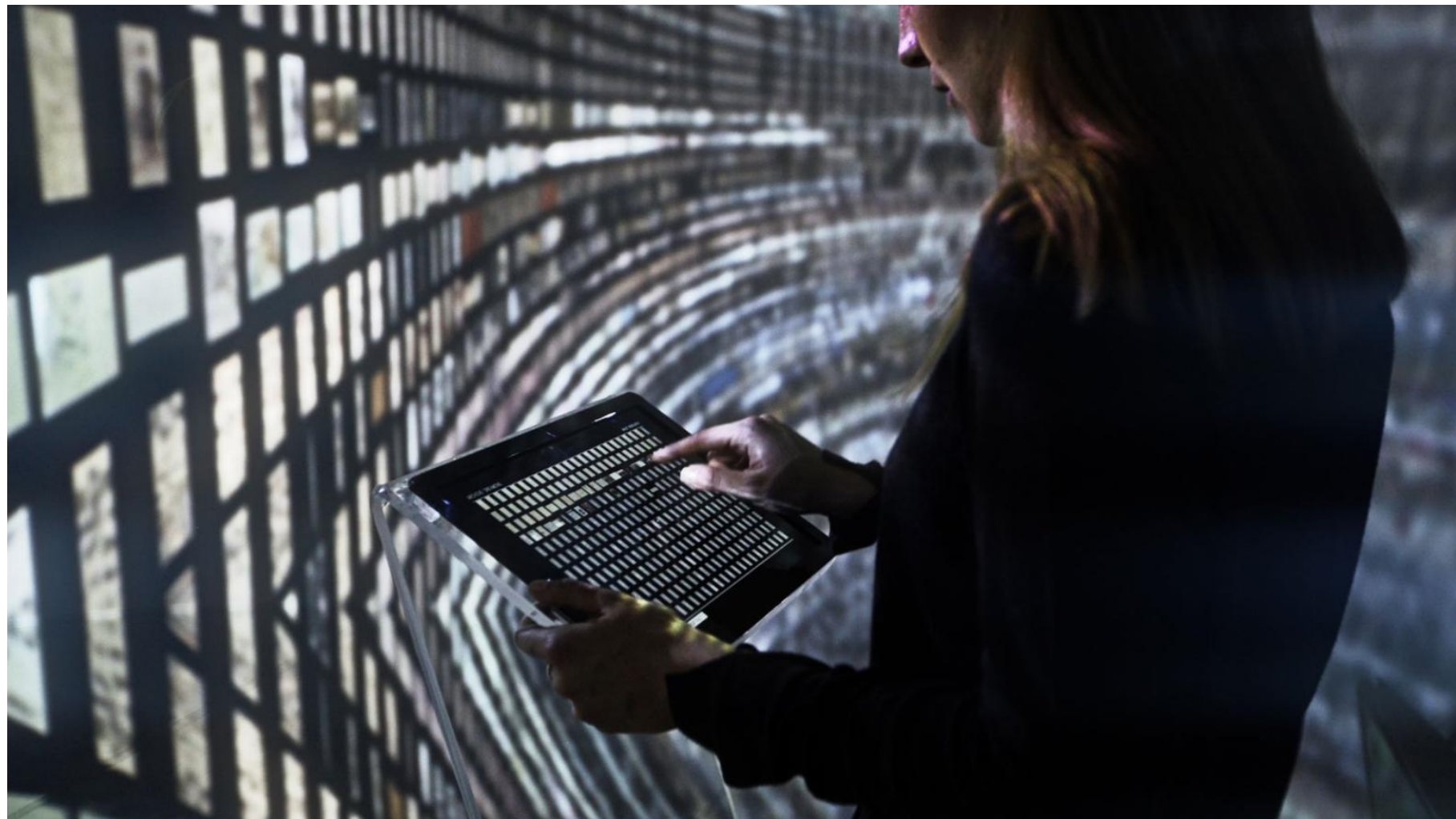
Miscellaneous / Portraits

Georges Zarifi (1810 - 1884)

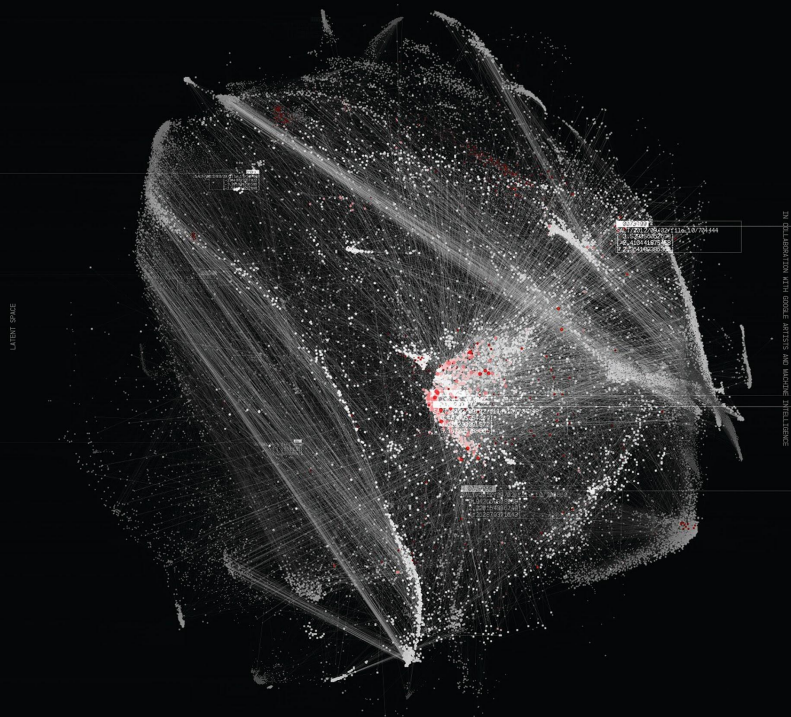






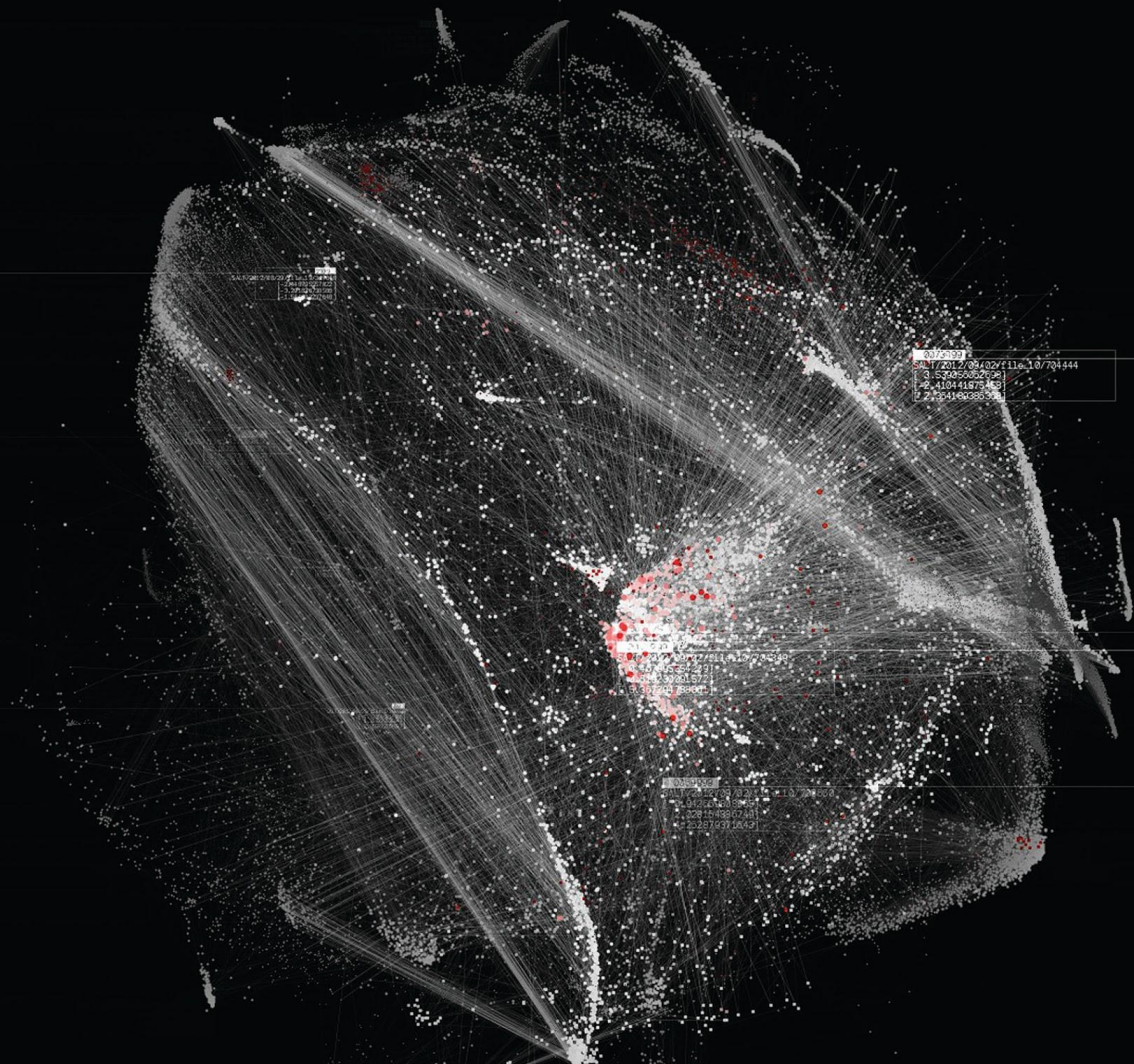


## ARCHIVE DREAMING



IN COLLABORATION WITH GOOGLE ARTISTS AND MACHINE INTELLIGENCE

LATENT SPACE







=

E5706834

BB14258DC8B8

SALT ARCHIVE, ISTANBUL

CC0 - 4700044  
F00 - 410000

CC0 - 4700044  
F00 - 410000

CC0 - 4700044  
F00 - 410000

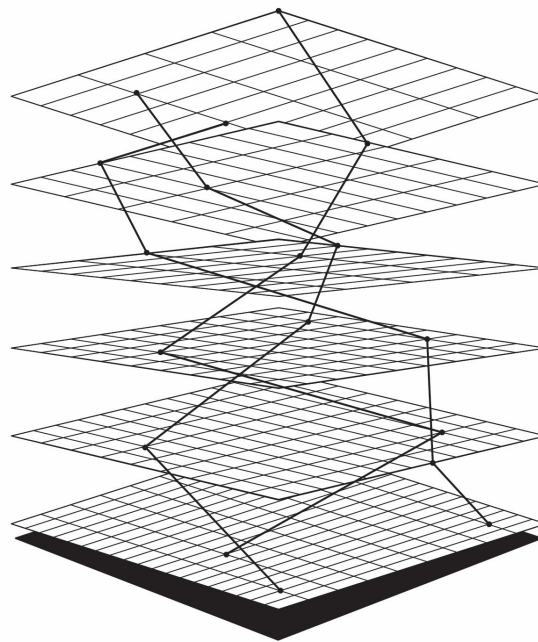
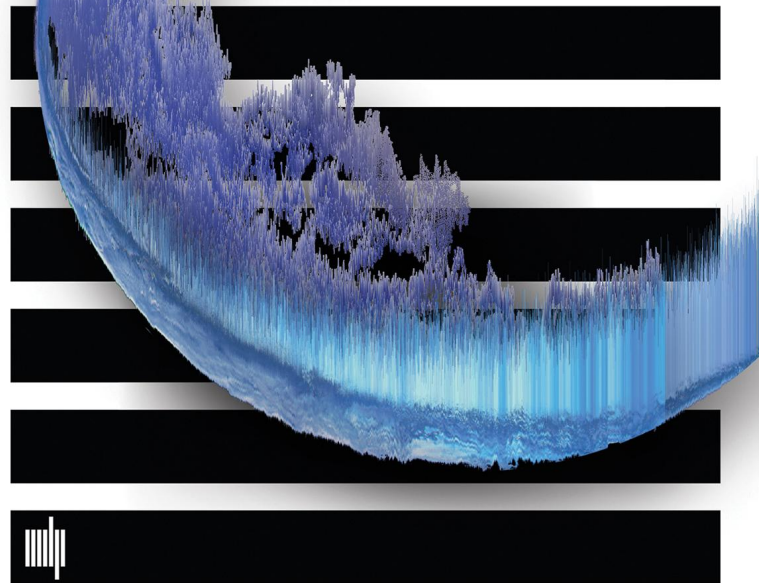
FEATURE\_EXTRACTION  
6DFE1C



The Stack  
| On Software  
and Sovereignty

Benjamin H. Bratton

# The Stack



**User**  
**Interface**  
**Address**  
**City**  
**Cloud**  
**Earth**

Keller Easterling

# Extra state craft : The Power of infrastructure space



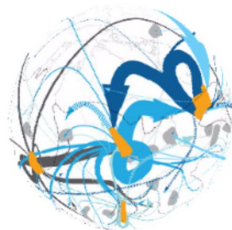
ZONE



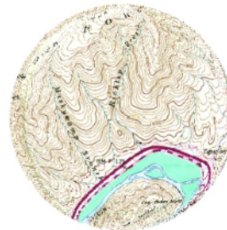
CABLE



QUALITY



DISRUPT



INTERSTATE



YASUNÍ-ITT

## EXTRA STATE CRAFT

GLOBAL  
INFRASTRUCTURE  
AS A MEDIUM OF  
POLITY ...

Login

New Tools that Generate  
New Languages that Reveal  
New Relations that Require  
New Contracts based on  
New Ontology



# China seeks glimpse of citizens' future with crime-predicting AI

Companies and police develop technology to stop criminals before they act



© Bloomberg



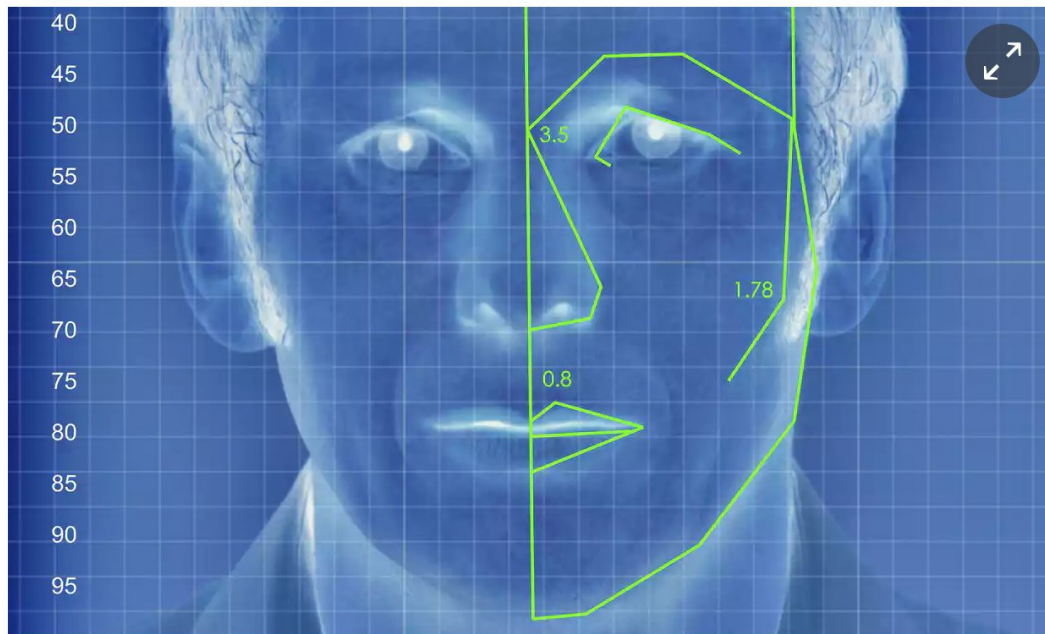
[Save to myFT](#)

JULY 23, 2017 by: **Yuan Yang**, Yingzhi Yang and Sherry Fei Ju in Beijing

China, a surveillance state where authorities have unchecked access to citizens' histories, is seeking to look into their future with technology designed to predict and prevent crime.

# New AI can guess whether you're gay or straight from a photograph

An algorithm deduced the sexuality of people on a dating site with up to 91% accuracy, raising tricky ethical questions



 An illustrated depiction of facial analysis technology similar to that used in the experiment. Illustration: Alamy

# a little gender and identity study

(weekend project by blaisea)

## **Setup**

65 question survey

Takes ~2.5 minutes to complete

Focusing on gender, sexuality, identity and presentation

Goal: quantitative insight into the ontology of gendered identity

Administered on Mechanical Turk to ~3000 subjects at \$0.35 each

Responses complete in a few hours

(Not done on Google's dime)

## **Questions**

Body

Presentation

Attraction

Identity

## **Questions\***

Body

Presentation

Attraction

Identity

\*In the actual survey the questions are not grouped into sections. Also, lines between “nature”, “culture”, and “choice” are not always distinct, and in some cases contentious or ambiguous. This applies to “innate” orientation vs. behavior, race vs. ethnicity, and physical traits that can be surgically altered.



## Questions

Body

Presentation

Attraction

Identity

2 numeric,  
5 yes/no

Age

Height

Do you menstruate?

Have you ever menstruated?

Do you have a penis?

Do you have a vagina?

Have you ever been pregnant?

## Questions

Body

Presentation

Attraction

Identity

41 yes/no

Do you have long hair?  
Do you wear dresses / skirts?  
Do you wear pants?  
Do you ever wear a bra?  
Do you have long nails?  
Do you ever paint your nails?  
Do you have an ear piercing?  
Do you ever wear stockings?  
Do you ever wear high heels?  
Do you ever wear ties?  
Do you sometimes wear your hair in a ponytail?  
Do you like football?  
Do you attend a book club?  
Do you cook?  
Do you wash the dishes?  
Do you bake?  
Do you have a beard or moustache?  
Do you ever use makeup?  
Do you ever use colored lipstick?  
Do you get manicures?  
Do you get pedicures?  
Do you wax?  
Do you have callouses on your hands?  
Do you sometimes wear work boots?  
Do you ride a motorcycle?  
Do you play shooter video games?  
Do you ever wear boxer shorts?  
Do you ever wear panties?  
Do you shave your legs?  
Do you shave your armpits?  
Do you shave your face?  
Have you ever been in a fistfight?  
Do you use the men's bathroom?  
Do you use the women's bathroom?  
Do you do household repairs?  
Do you wear colorful clothes?  
On paper, do people assume from your name that you are female?  
On paper, do people assume from your name that you are male?  
Are you married?  
Do you own a gun?  
Do you hunt?

## **Spoilers**

There are no rules for identity.

**We see the gender binary.**

**We see the gender “spectrum”.**

**We see that sex-gender-sexuality-orientation is in fact higher-dimensional.**

Presentation predicts identity more strongly than body data does.

Body and behavior are strong predictors of gender identity, weaker predictors of other identities.

More people are intersex, trans, or gender nonconforming than you probably think.

Same-sex sexual attraction is more common than same-sex romantic attraction.

Same-sex attraction among women is extremely common.

Young people are increasingly nonconformant to either old identities or gender/sexuality binaries.

Attempts to validate identity with a body correlate will fail and do harm (cf. women and the Olympics).

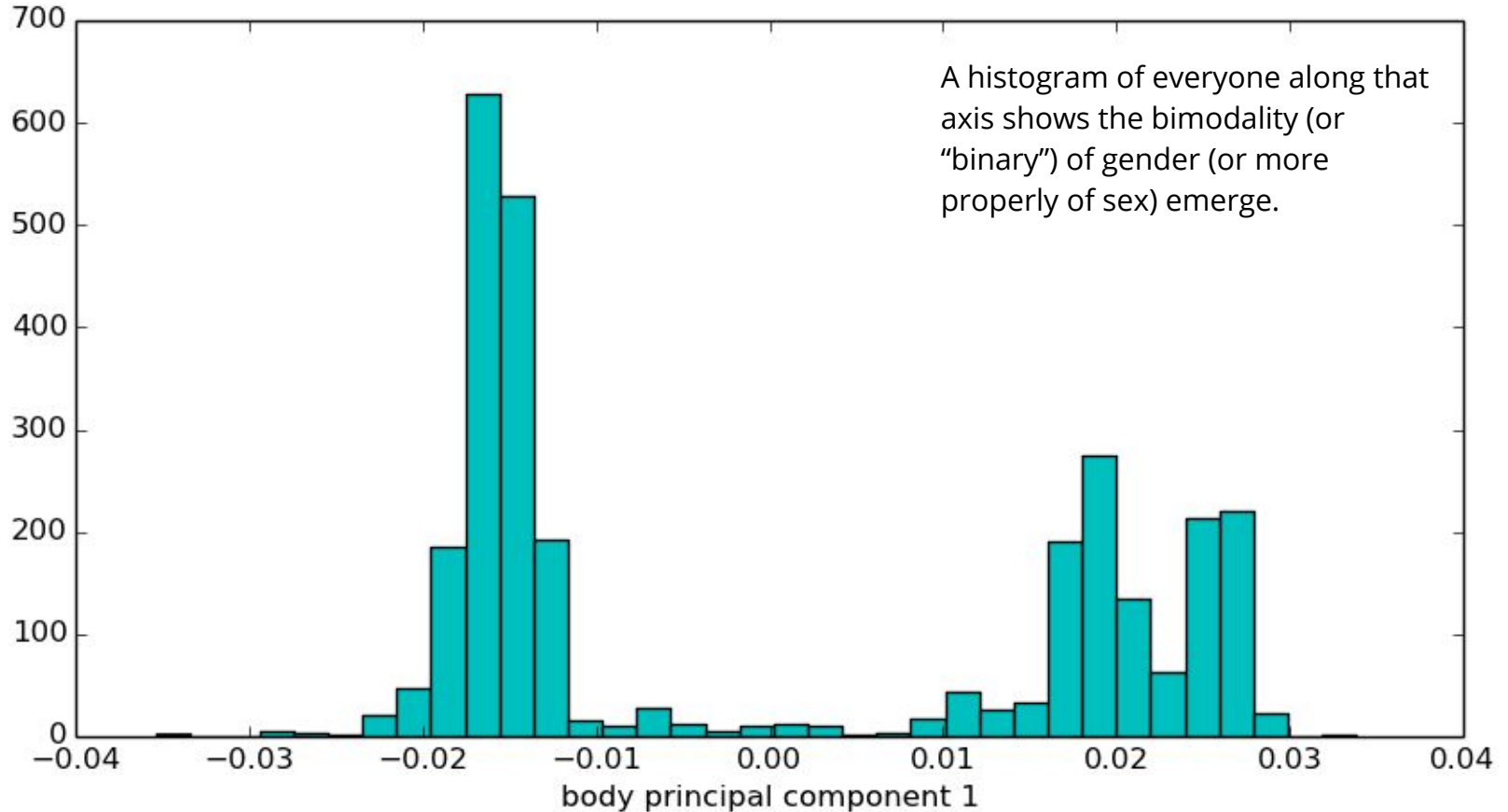
### III. Gender as an emergent binary, spectrum, and vector space

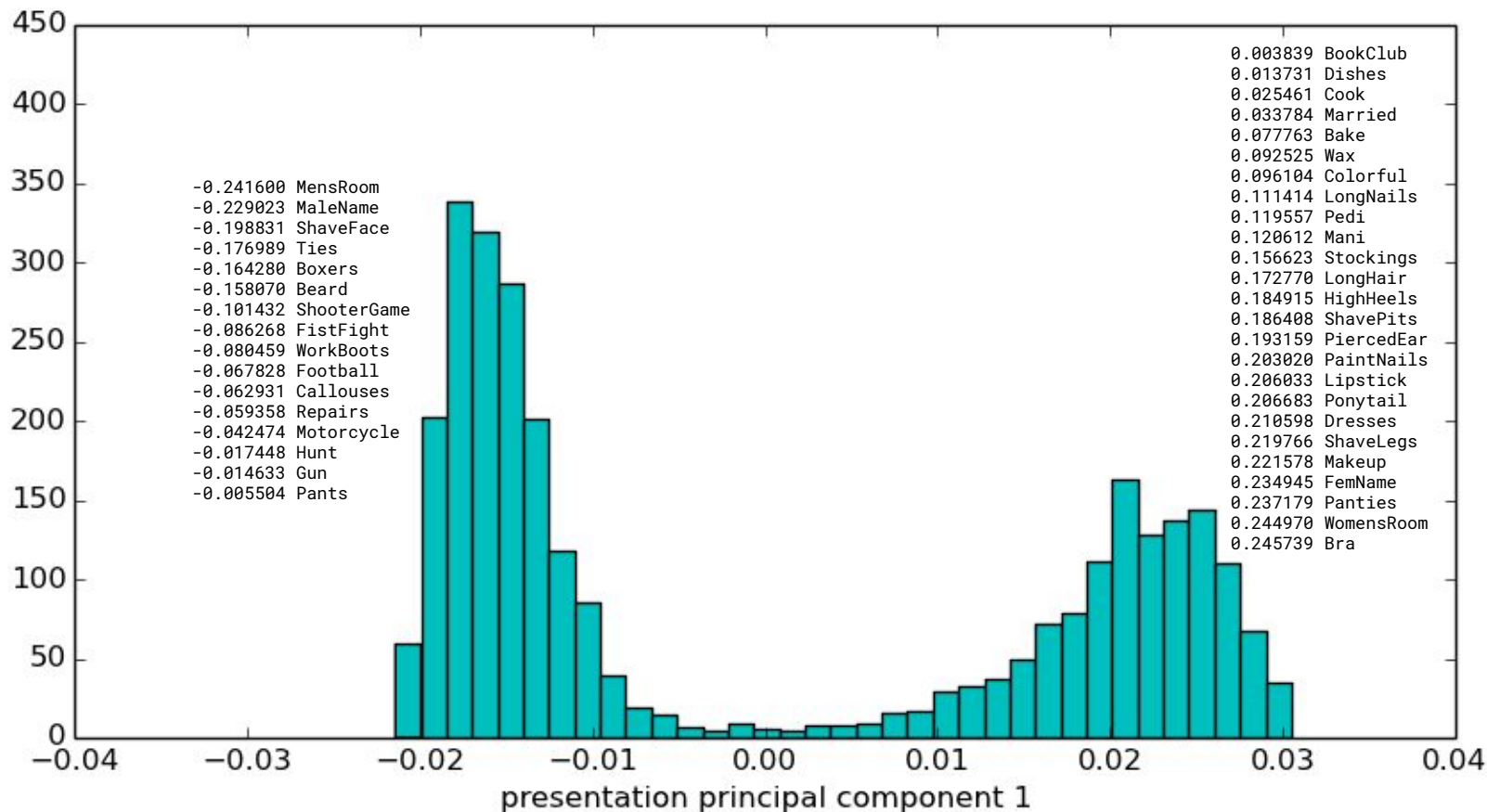
Questions		Age
Body		Height
	2 numeric,	Do you menstruate?
Presentation	5 yes/no	Have you ever menstruated?
Attraction		Do you have a penis?
Identity		Do you have a vagina?
		Have you ever been pregnant?

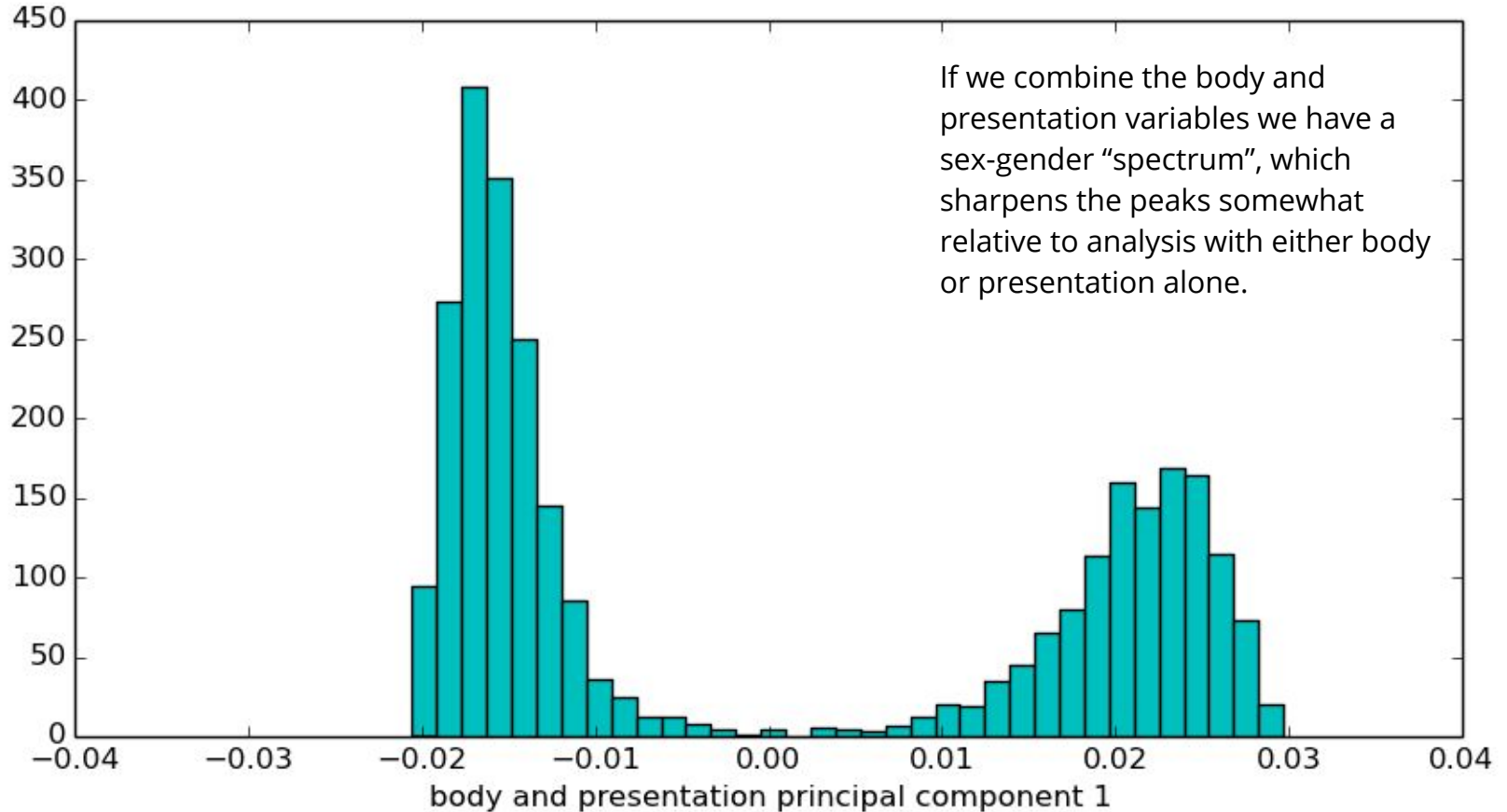
Taking the [Singular Value Decomposition](#) (SVD) we get a leading mode that looks like it pulls out gender as the dominant dimension:

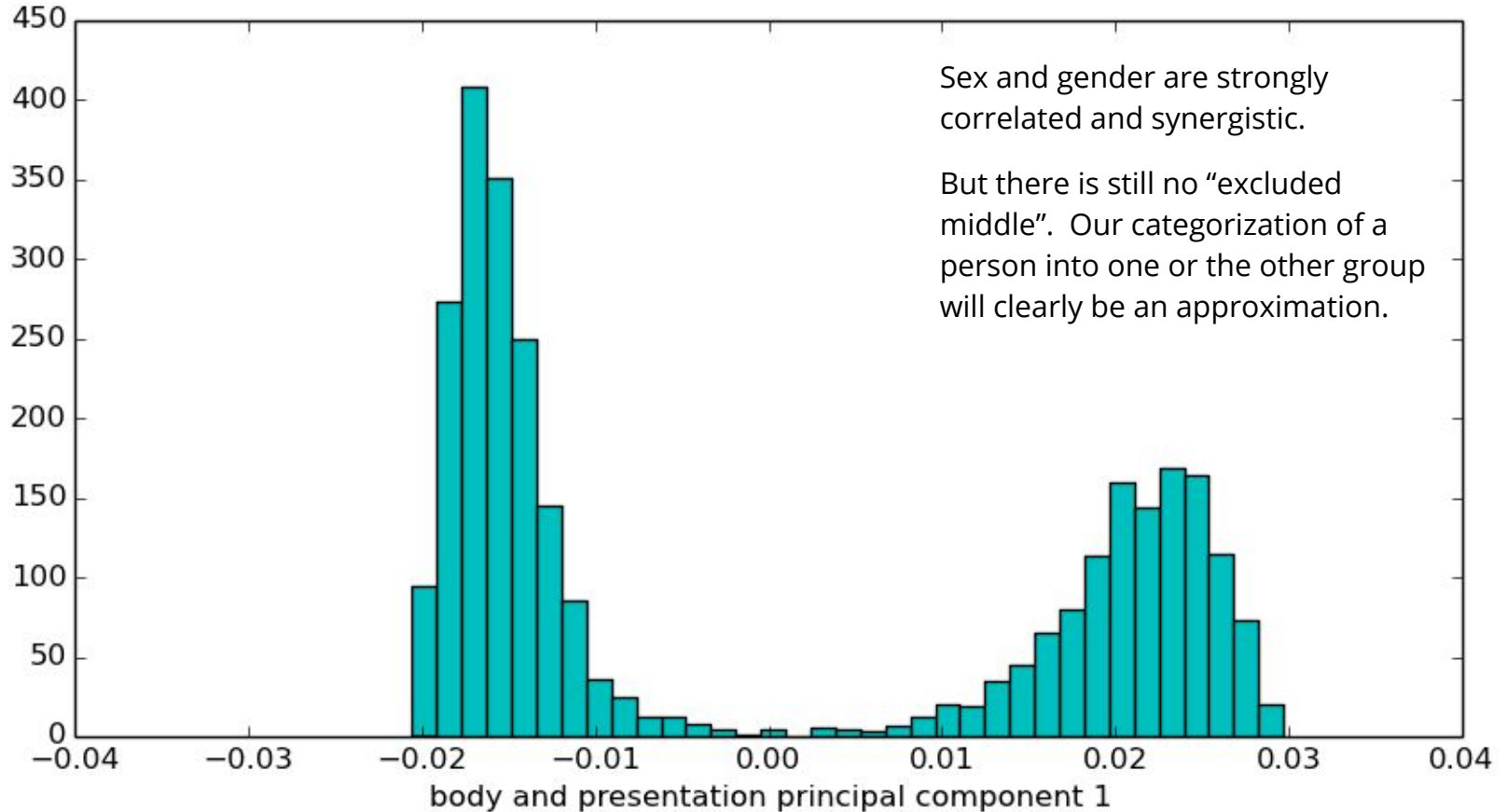
```
-0.463768 Penis
-0.327008 HeightGt5ft6
0.277065 BeenPregnant
0.414318 Menstruate
0.460653 Menstruated
0.466218 Vagina
```

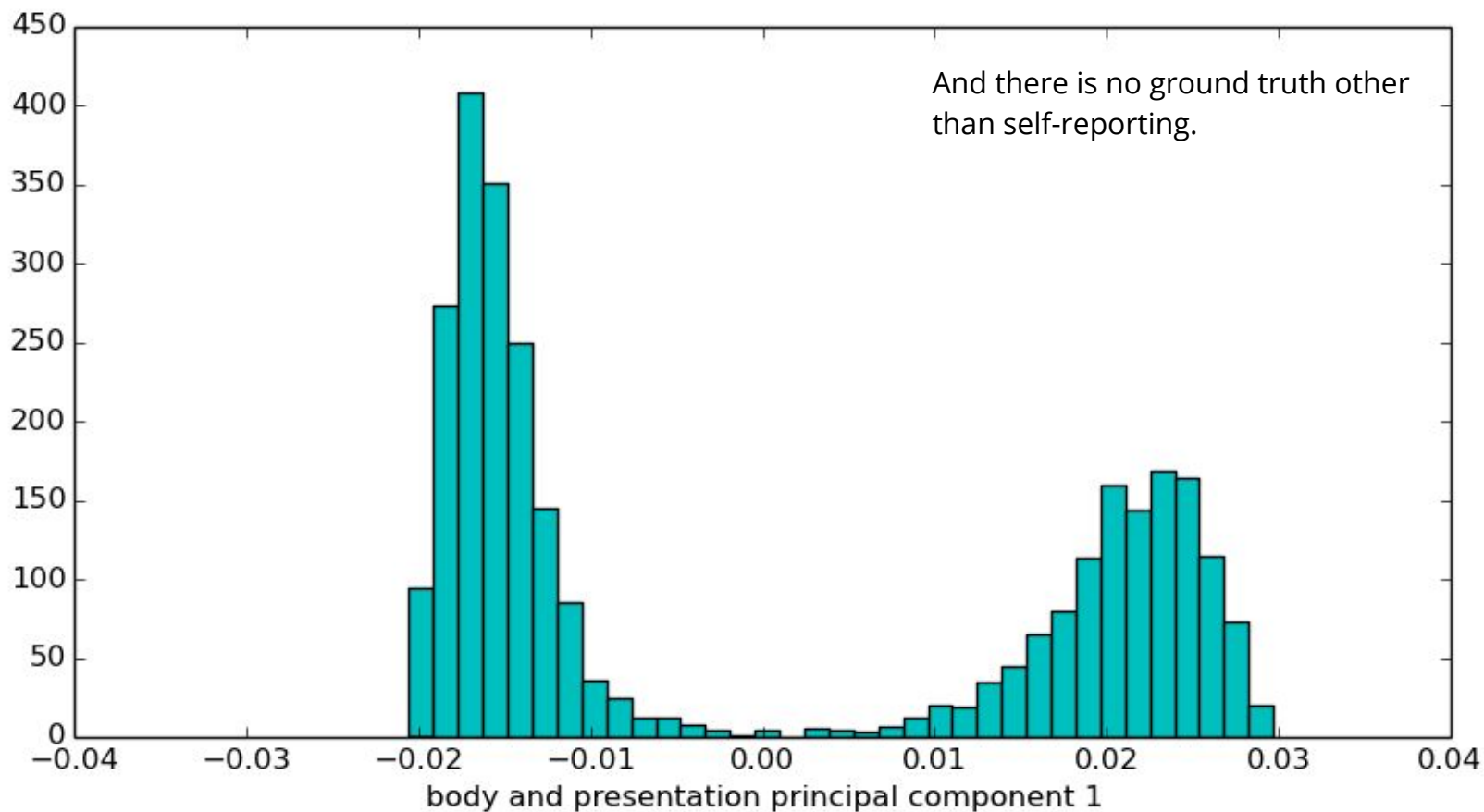




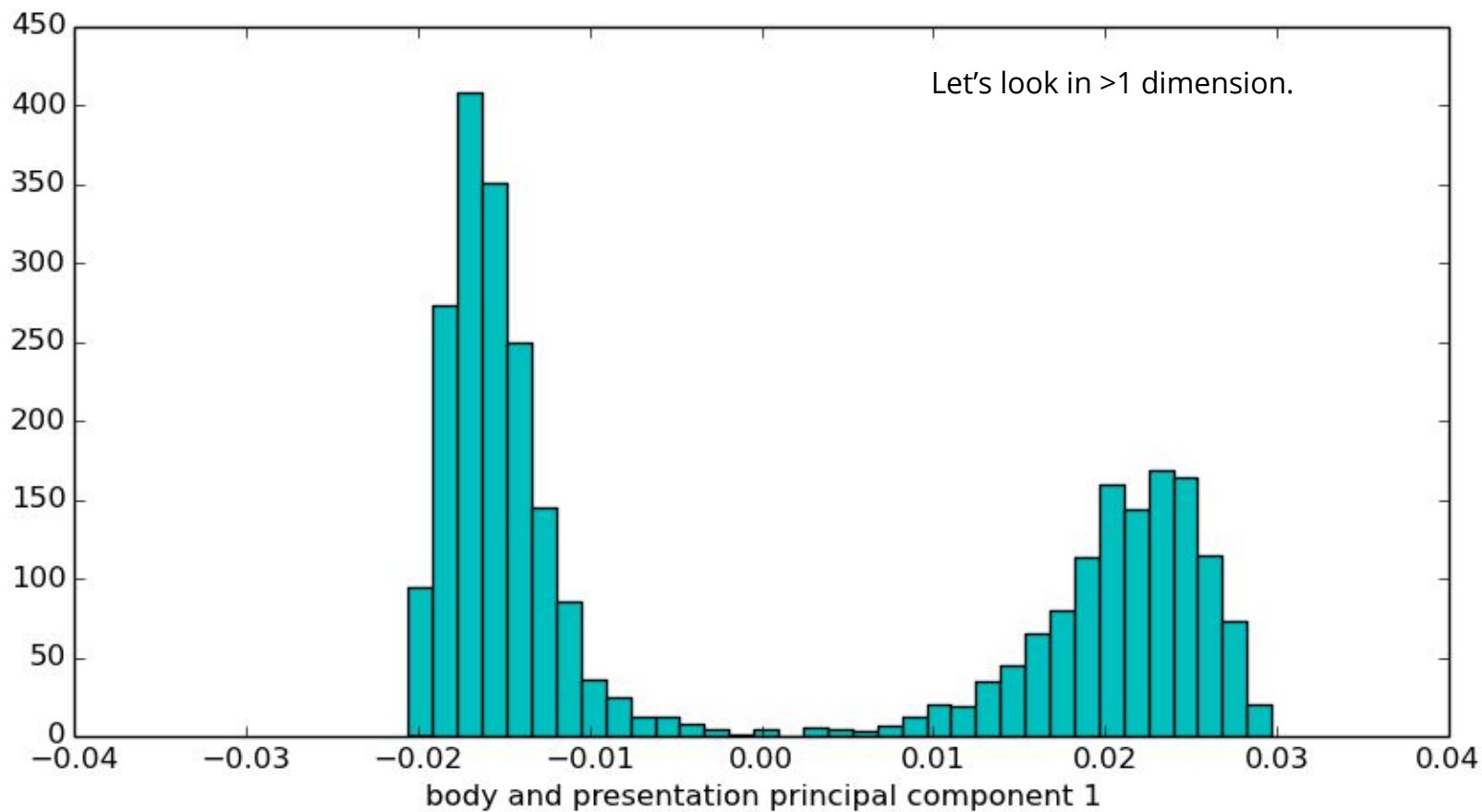


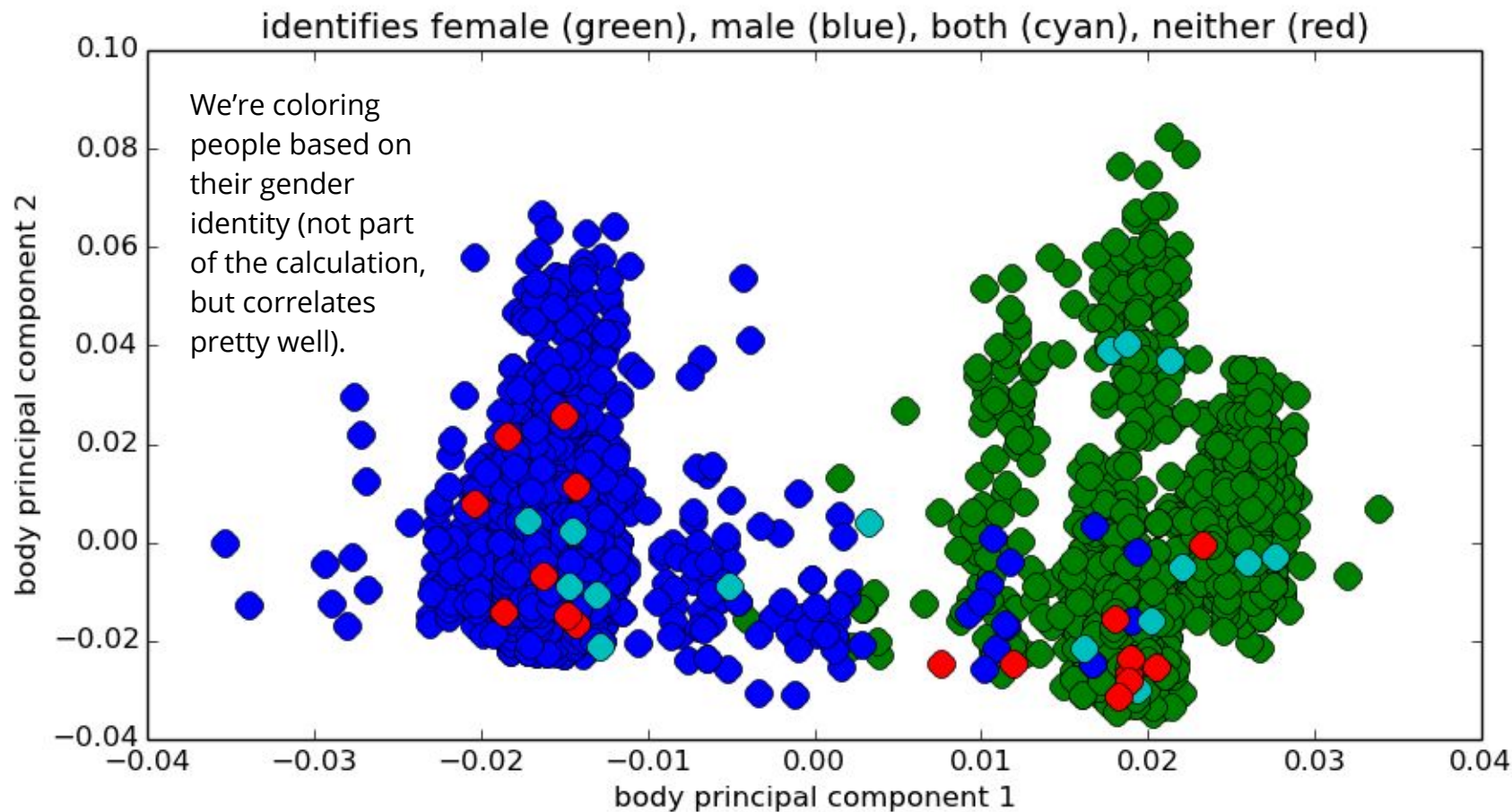


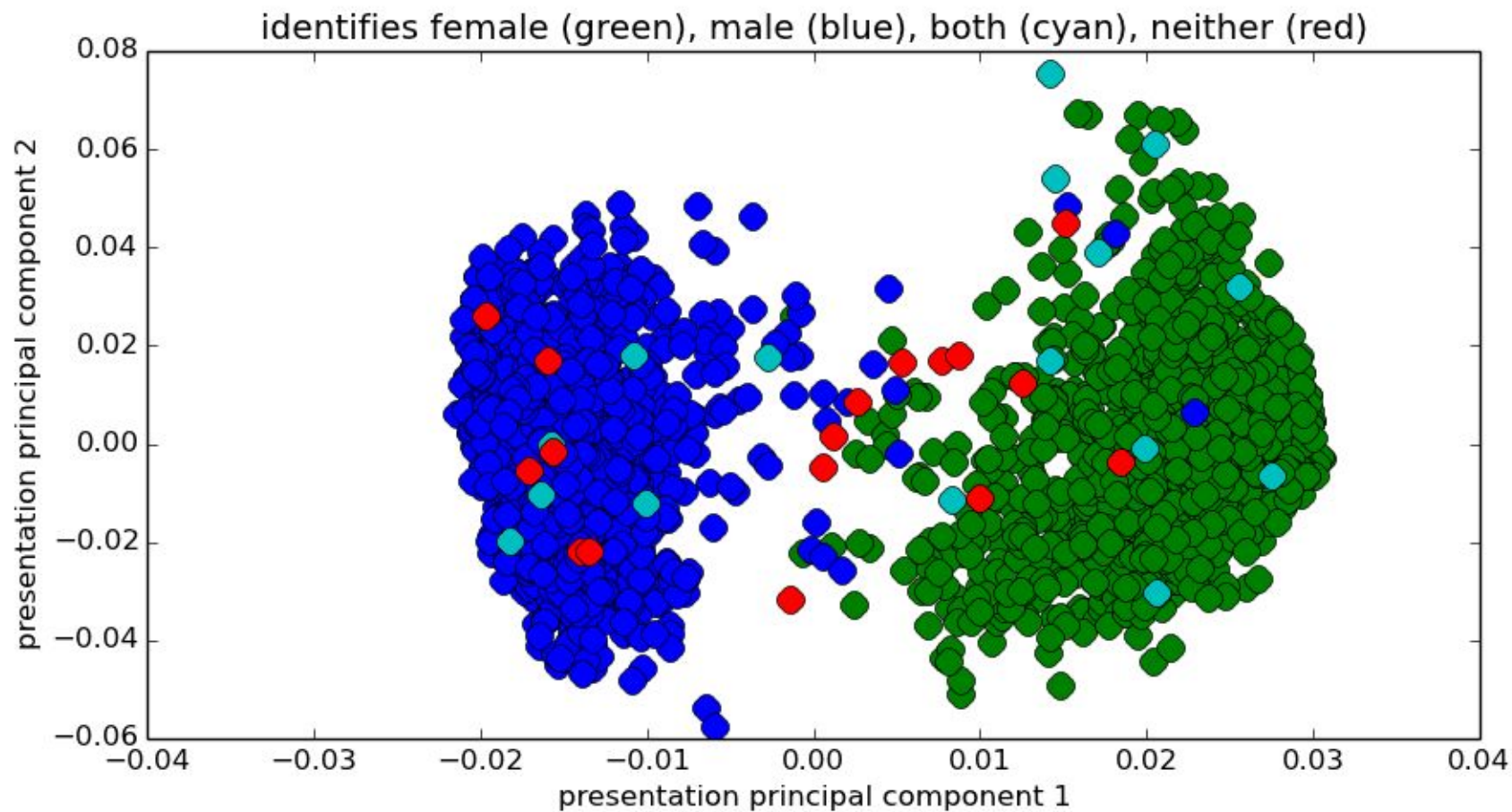


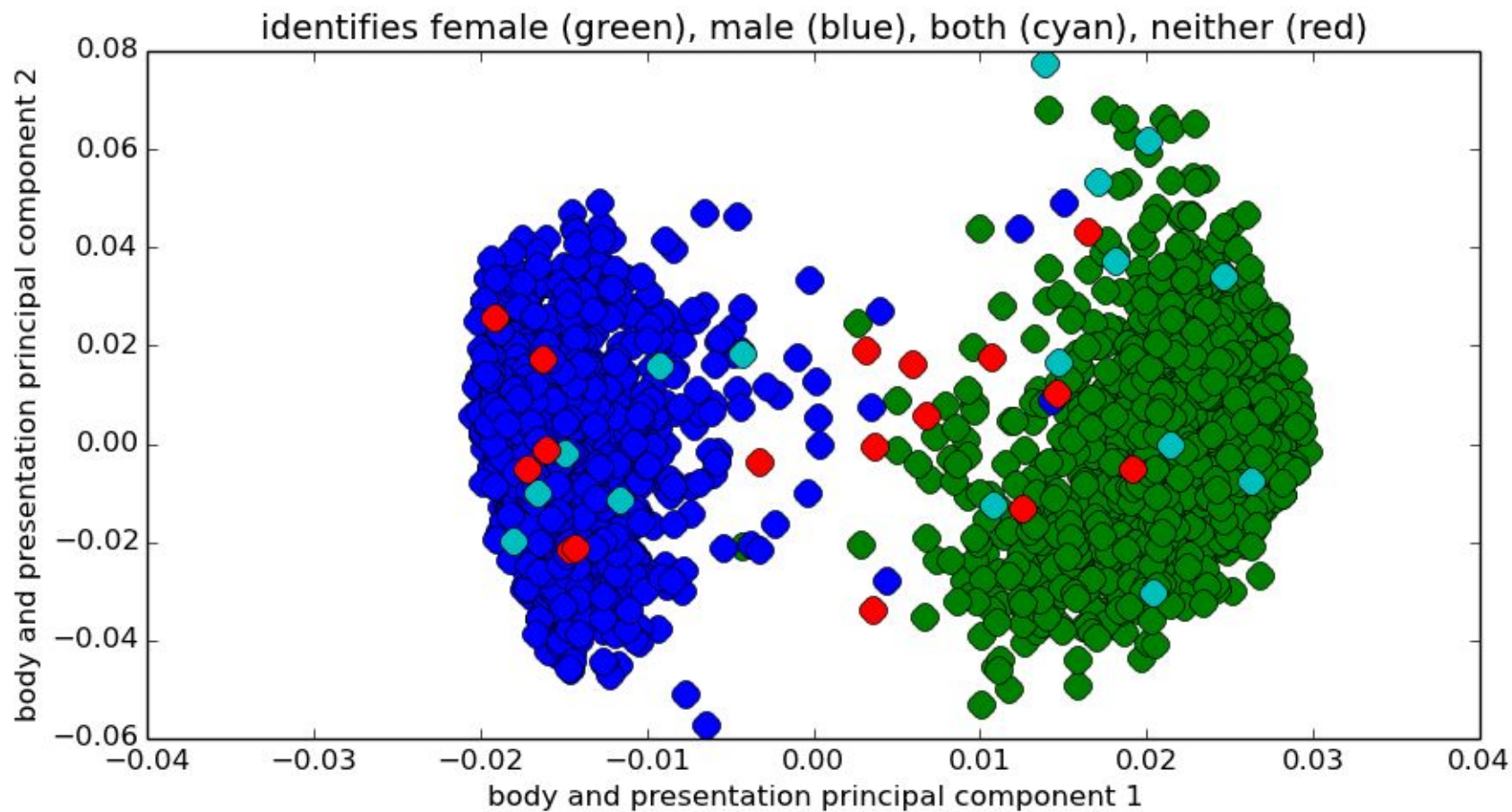


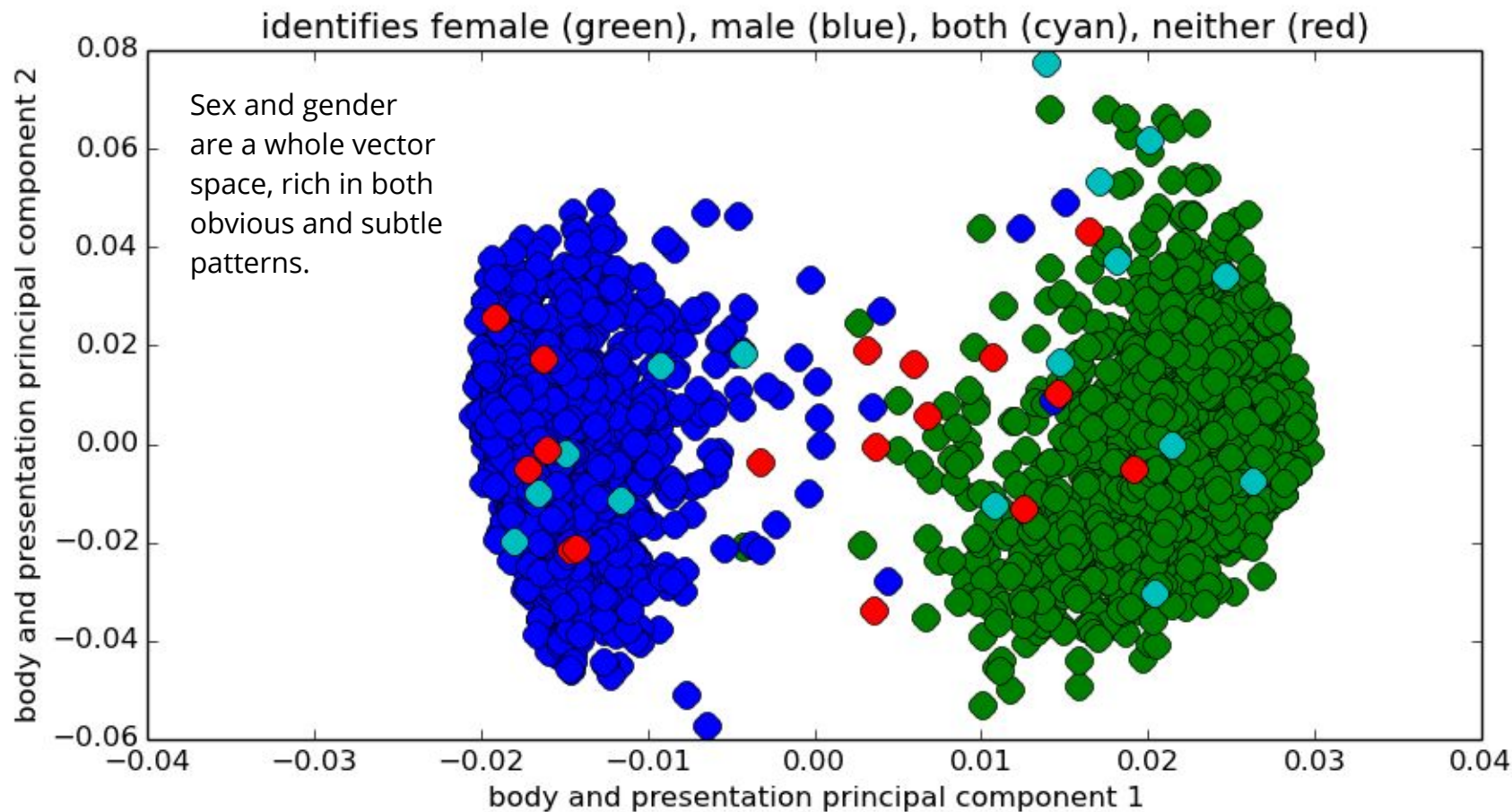




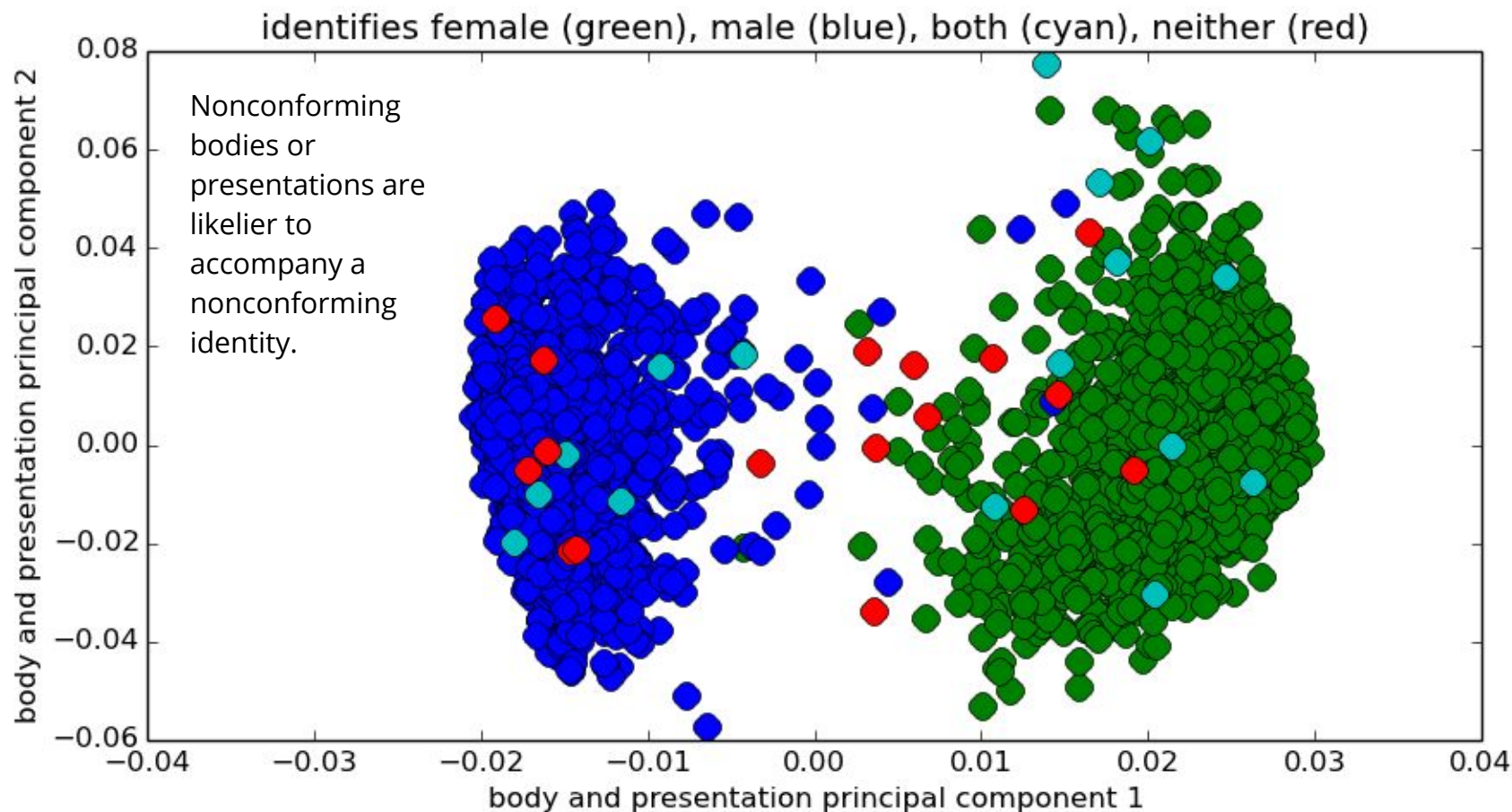


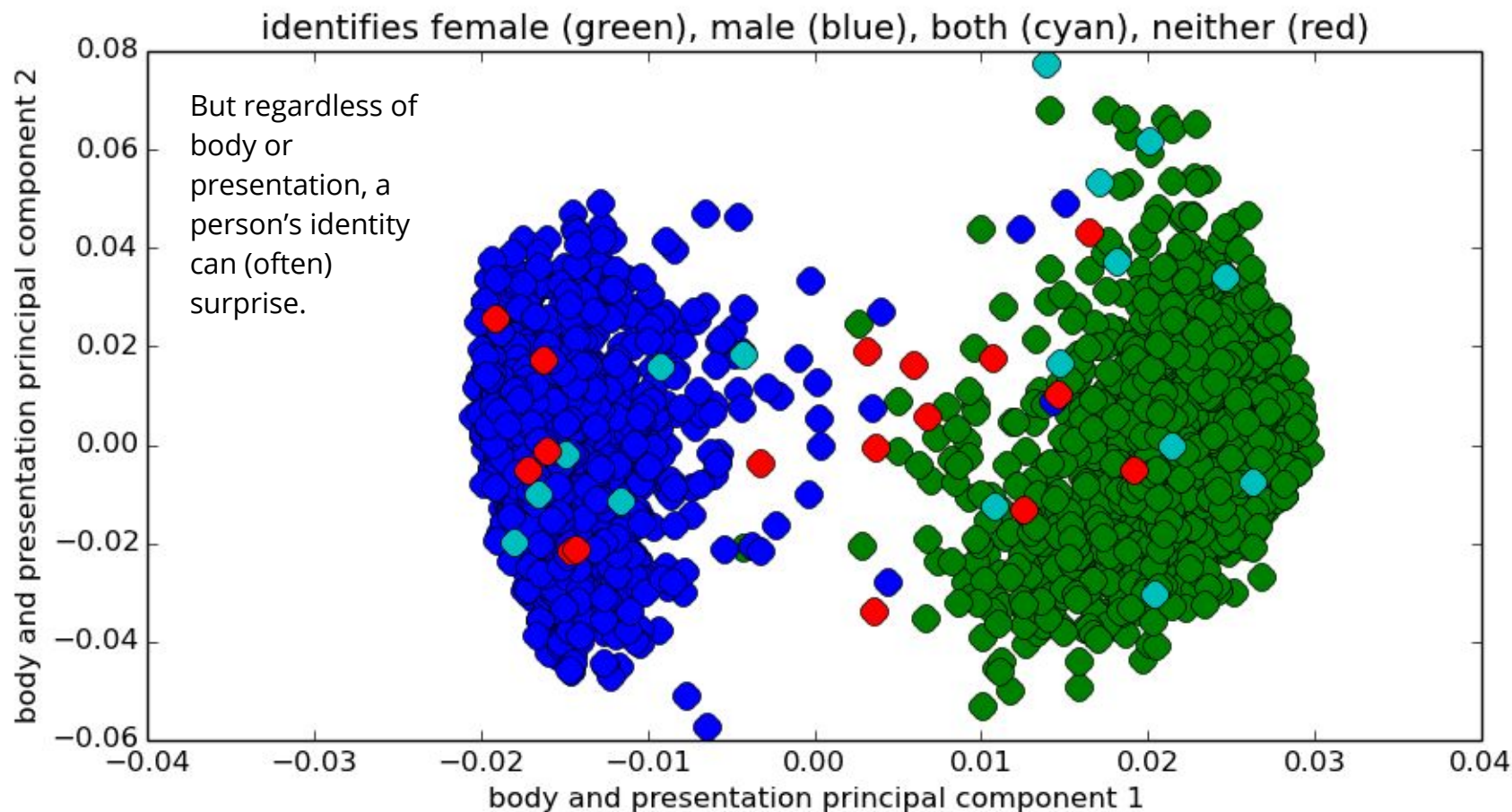












**So again:**

**There are no rules for identity.**

**We see the gender binary.**

**We see the gender “spectrum”.**

**We see that sex-gender-sexuality-orientation is in fact higher-dimensional.**

Presentation predicts identity more strongly than body data does.

Body and behavior are strong predictors of gender identity, weaker predictors of other identities.

More people are intersex, trans, or gender nonconforming than you probably think.

Same-sex sexual attraction is more common than same-sex romantic attraction.

Same-sex attraction among women is extremely common.

Young people are increasingly nonconformant to either old identities or gender/sexuality binaries.

Attempts to validate identity with a body correlate will fail and do harm (cf. [sex testing in the Olympics](#)).



**TESTO**

**JUNKIE**

---

**PAUL B. PRECIADO**

---

**SEX, DRUGS, AND BIOPOLITICS IN  
THE PHARMACOPORNOGRAPHIC ERA**

---

"Inventive, daring, and blindingly lucid, Beatriz Preciado  
opens a new branch of philosophical practice."

—AVITAL RONEILL, author of *CRACK WARS*

XF

# XENOFEMINISM

A Politics for Alienation

Laboria Cuboniks



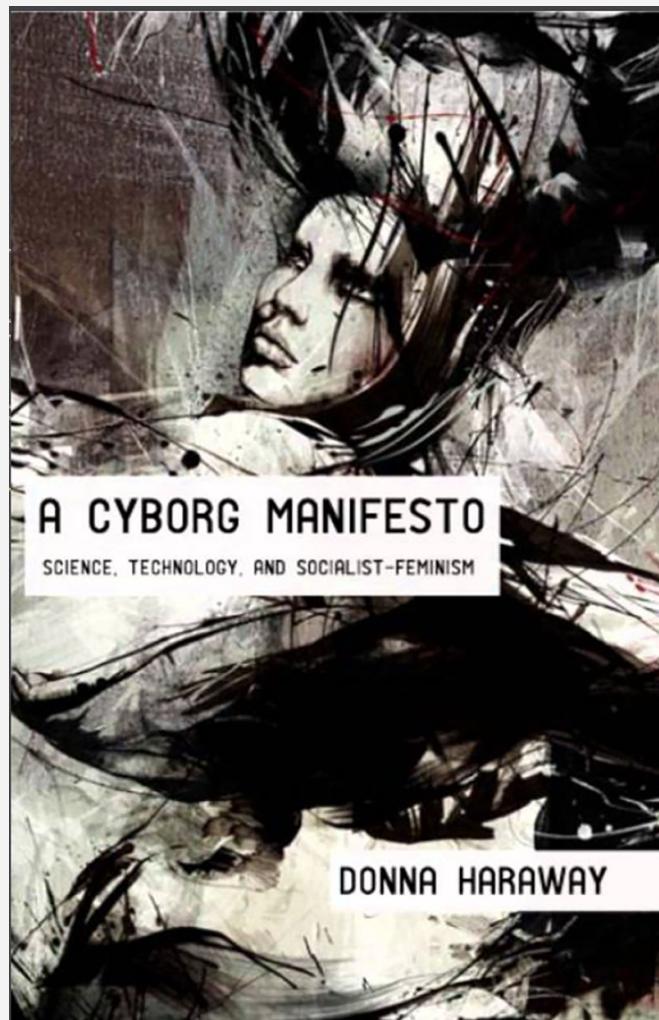
New Tools that Generate  
New Languages that Reveal  
New Relations that Require  
New Contracts based on  
New Ontology

Ideology:

a system of ideas and ideals, especially one which forms the basis of economic or political theory and policy.

Ontology:

the branch of metaphysics dealing with the nature of being.



# A CYBORG MANIFESTO

SCIENCE, TECHNOLOGY, AND SOCIALIST-FEMINISM

DONNA HARAWAY

A black and white microscopic image of plant cells, showing various sized circular and polygonal cells with thick walls and some internal structures. The image serves as the background for the book cover.

Timothy  
Morton

# Hu. man kind

Solidarity with  
Nonhuman  
People





JOURNEYS TO SACRED REALMS

# The Shaman & AYAHUASCA



WINNER  
"Best Documentary"  
Albuquerque Film  
Festival



OFFICIAL  
SELECTION  
Ayahuasca Shamanism  
Conference







Artists and Machine Intelligence

@artwithMI  
@kenricmcdowell